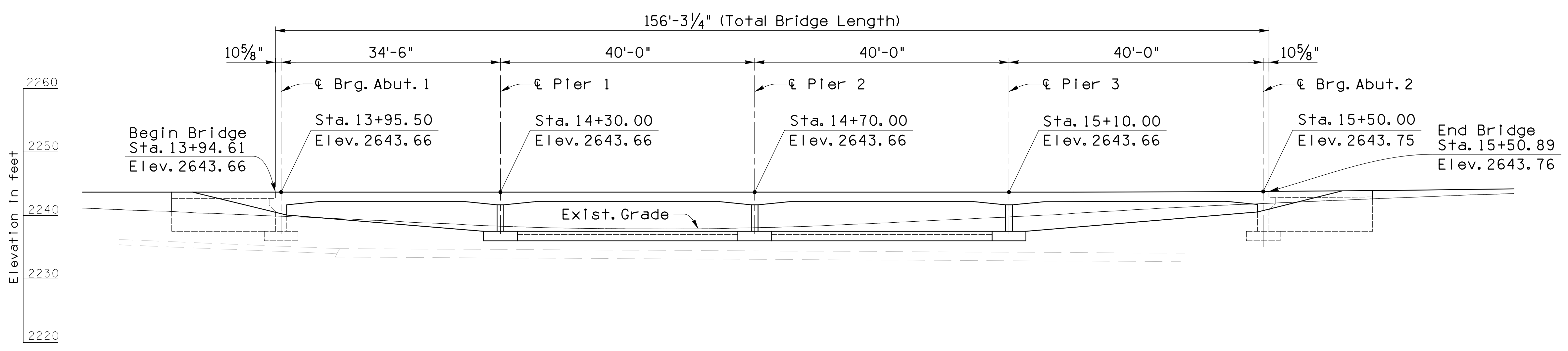


GENERAL PLAN
 1" = 10'
 New 4-Span Reinforced Concrete Slab Bridge
 Skew 20° Left
 1'-0" Contour Interval

Title	Dwg. No.
General Plan & Elevation	BR01
Typical Section & Profile Grade	BR02
General Notes & Quantities	BR03
Foundation Layout	BR04
Abutment 1 Plan and Elevation	BR05
Abutment 2 Plan and Elevation	BR06
Wingwall Details	BR07
Pier Plan & Elevation	BR08
Deck Plan	BR09
Deck Sections	BR10
Approach Slab & Deck Joint Details	BR11
Rail Details	BR12

ADOT STRUCTURE DETAIL DRAWINGS:

Approach Slab Details	SD 2.01
Deck Joint Assembly	
Compression Seal	SD 3.01
Structural Excavation	SD 5.01
Structure Backfill	SD 5.02
Retaining Wall	
Reinforced Concrete Cantilever	SD 7.01



ELEVATION
 1" = 10'

Note:
 Stations and Elevations are at Cst. ℓ .
 Dimensions are measured along Cst. ℓ .

Project: _____

Revisions:

No.	Description

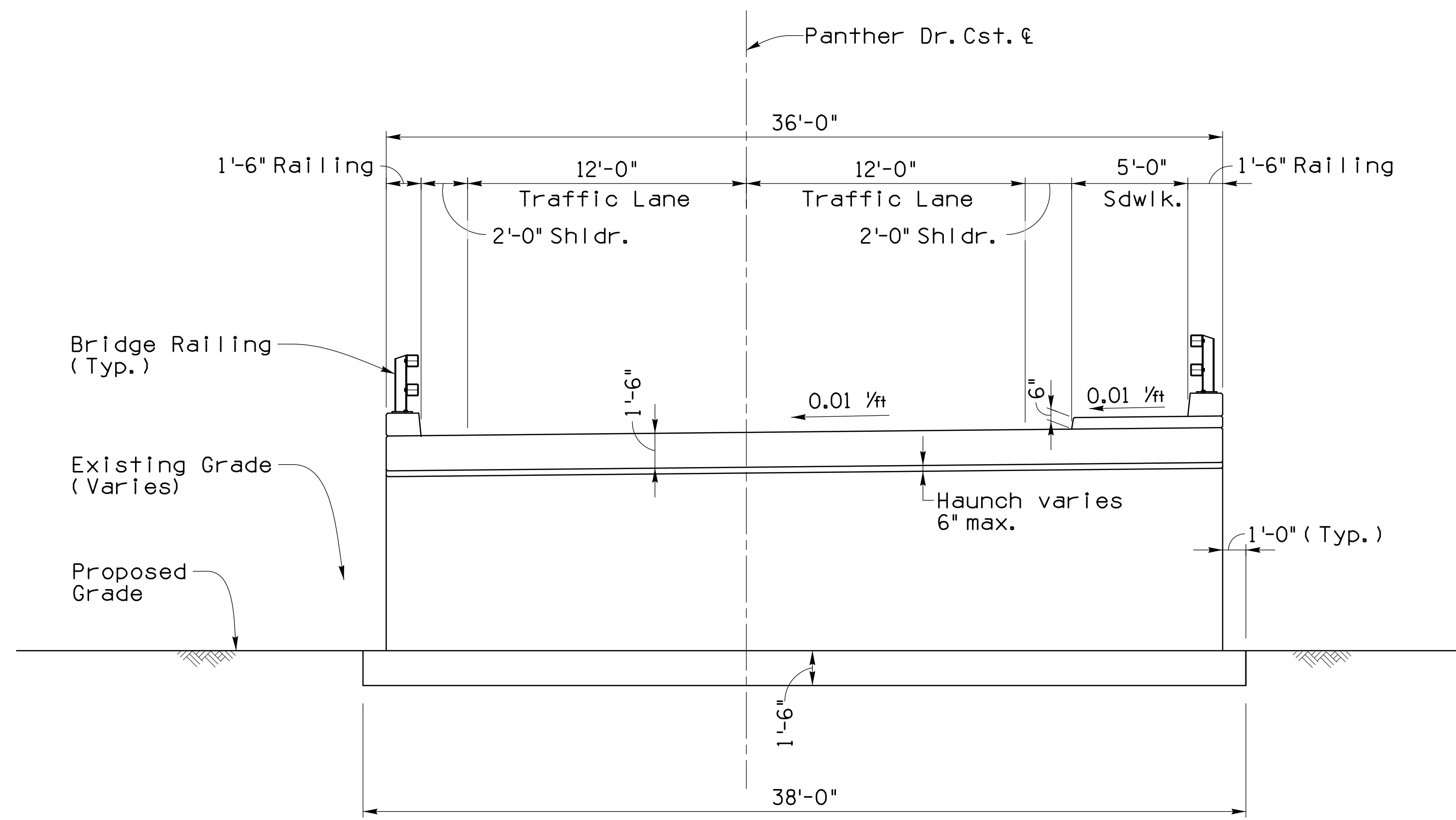
Designer: ESG
 Drawn by: JHS

100%
 NOT FOR
 CONSTRUCTION
 OR RECORDING

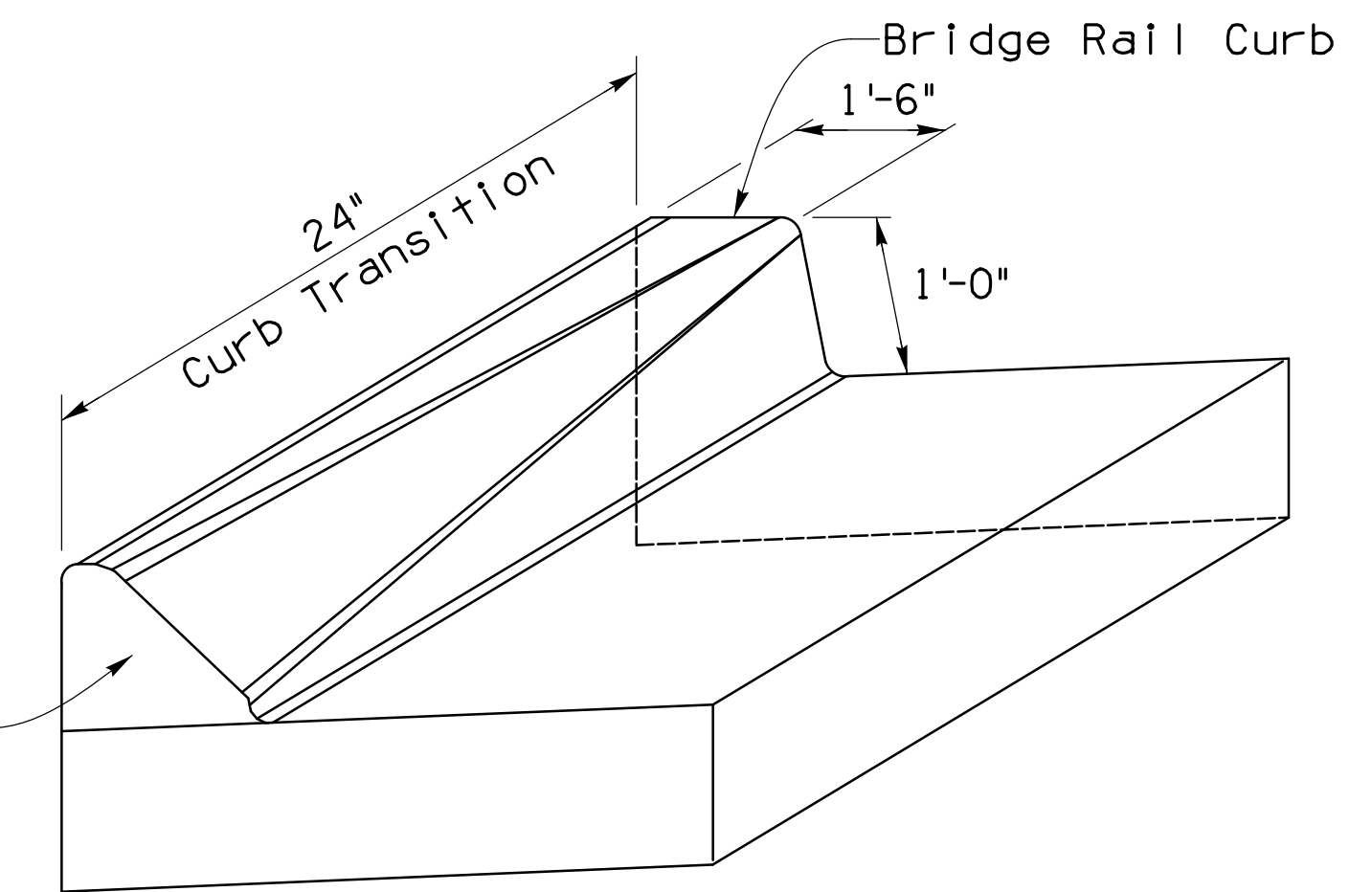
Job No.
23-0519

BR01

Sheet No.
17
 of 28

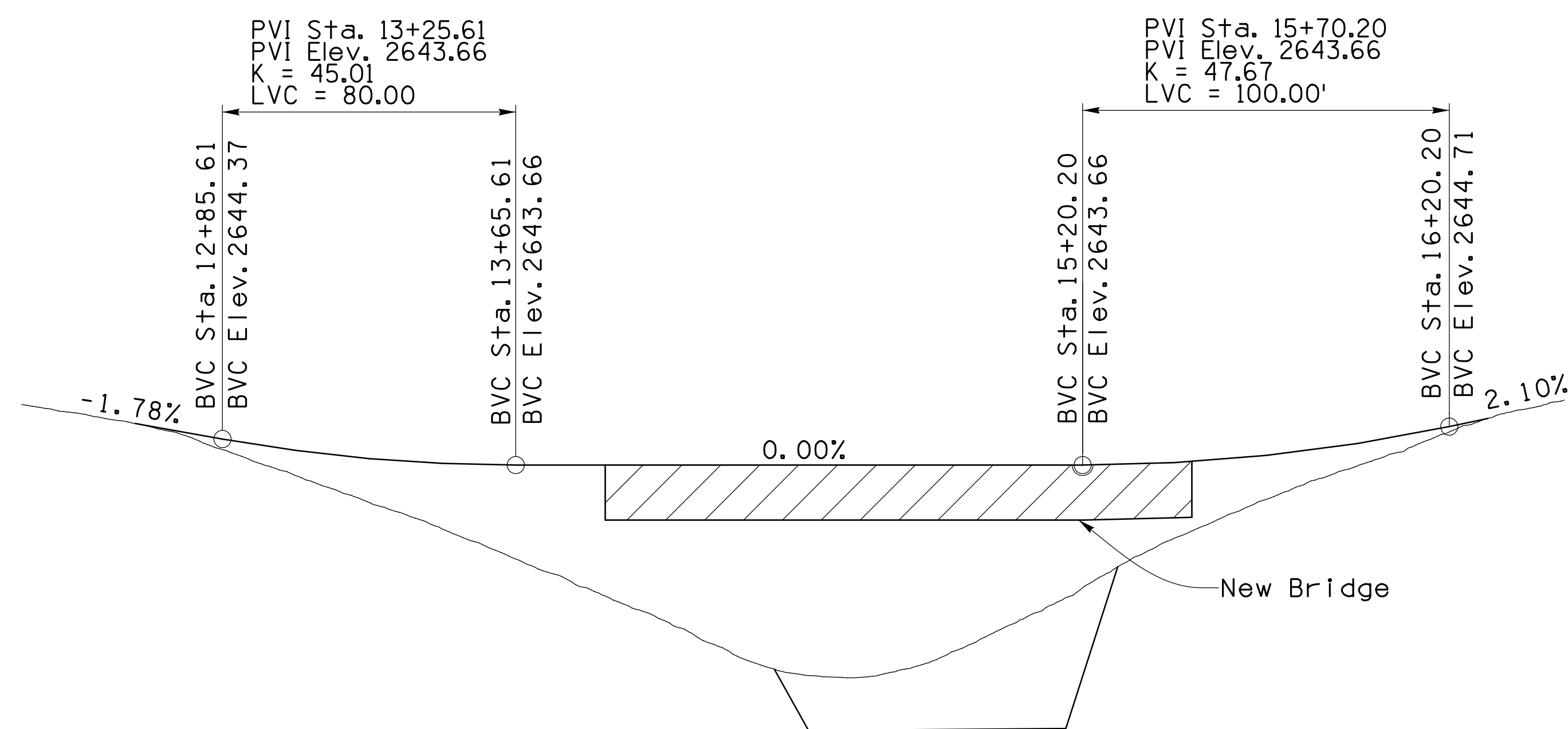


TYPICAL SECTION
1/4" = 1'-0"



Type 'E' Mountable
Curb and Gutter
See MAG Std.
Detail No. 220-2

CURB TRANSITION
No Scale



PROFILE GRADE
No Scale

Revisions:

No.	Description

Call at least two full working days before you begin excavation.
ARIZONA
 State Seal of the State of Arizona
 In Maricopa County: (002)263-1100
 Designer: ESG
 Drawn by: JHS

100%
 NOT FOR
 CONSTRUCTION
 OR RECORDING

Job No.
23-0519

BR02

Sheet No.
18
 of 28

GENERAL NOTES:

Construction Specifications
 ADOT Standard Specifications for Road and Bridge
 Construction 2021 Edition and special provisions.

Design Specifications
 AASHTO LRFD Bridge Design Specs. 8th Edition, 2017.

Dead Load
 Dead Load includes 25 psf for future wearing surface.

Live Load
 AASHTO HL-93 Design Truck + Design Lane & Design Tandem +
 Design Lane.

Load Distribution - $E = 96 + 1.44(S)(In)(S \text{ taken as the effective end span length})$

Inventory and operating ratings for HL-93 are in accordance with AASHTO Manual for Bridge Evaluation, 3rd Edition with 2017 Interims. Ratings based on the LRFR Method.
 Inventory Rating - RF = 1.32
 Operating Rating - RF = 1.70

Materials
 All concrete to be Class "S" unless noted otherwise.

All concrete shall be cast-in-place unless noted otherwise.

Reinforcing steel shall conform to ASTM Specification A615.
 All reinforcing steel shall be furnished as Grade 60.

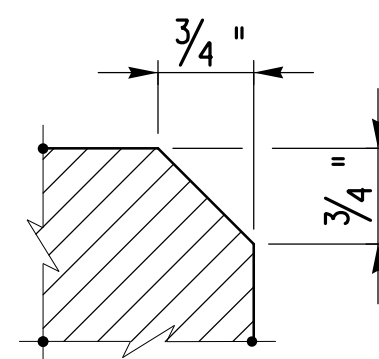
All bends and hooks for reinforcing steel shall meet the requirements of AASHTO Section 5.10.2.

All bend dimensions for reinforcing steel shall be out-to-out of bars. All placement dimensions for reinforcing steel shall be to center of bars unless noted otherwise.

All reinforcing shall have 2 inches clear cover unless noted otherwise.

Concrete Strengths:
 Deck, Curb & Sidewalk f' c = 4500 psi
 Approach Slab f' c = 4000 psi
 Abutments & Pier f' c = 4500 psi
 Wingwalls f' c = 4500 psi

Chamfer all exposed corners 3/4" unless noted otherwise.



TYP. CHAMFER DETAIL
 No Scale

Dimensions shall not be scaled from drawings.

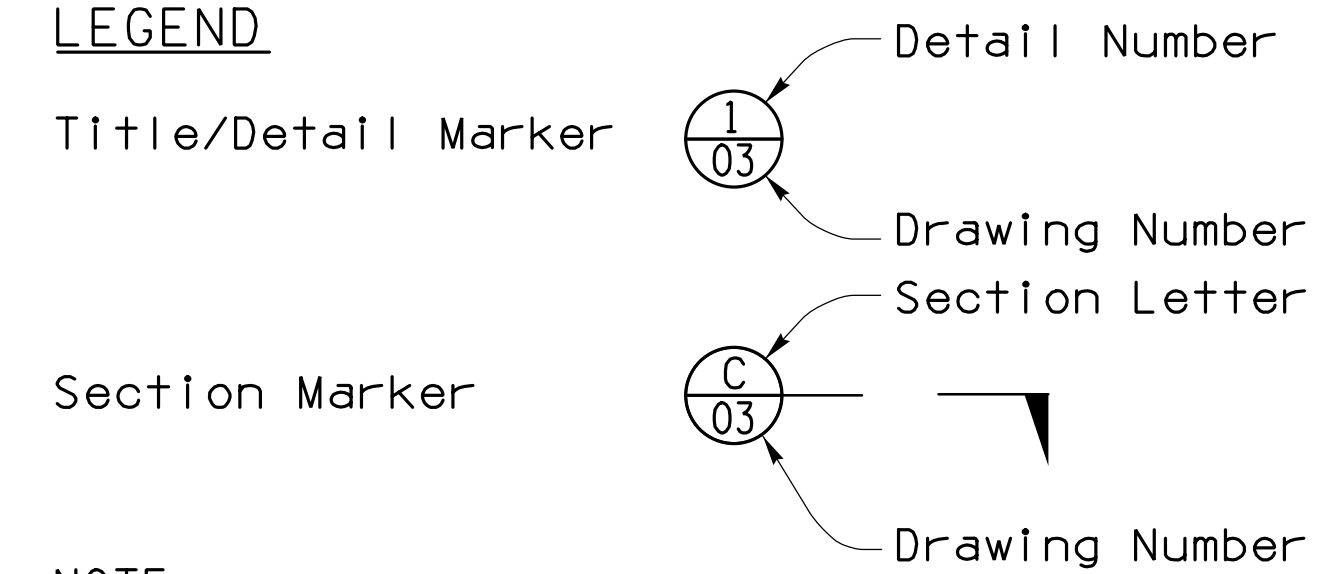
All dimensions are shown in feet-inches and all elevations are shown in feet unless noted otherwise.

Forms shall be cambered for dead load deflection, vertical curvature, form deflection and falsework settlement. Camber figure given in plan is for dead load only.

Contractor shall coordinate all existing conditions during construction of project. Utility information shown on the bridge plans may not be complete or accurately depict the location of facilities shown. The Contractor shall notify respective utility owners before commencing excavation. Conflicts shall be brought to the attention of the Engineer and resolved prior to proceeding with this work.

Contractor shall field verify all dimensions before construction or ordering of materials, any discrepancies shall be brought to the attention of the Engineer.

LEGEND



NOTE:

A line (-) in place of the Sheet number indicates that the SECTION or DETAIL is located on the same Sheet that the SECTION or DETAIL is cut.

APPROXIMATE QUANTITIES				
	STRUCTURAL EXCAVATION (CY)	STRUCTURE BACKFILL (CY)	STRUCTURAL CONCRETE CLASS S f' c=4500 psi (CY)	REINF STEEL (LBS)
Abutment 1	60	25	31	5,230
Pier 1	40	10	21	2,451
Pier 2	35	10	21	2,451
Pier 3	55	10	21	2,451
Abutment 2	85	25	31	5,236
Superstructure			371	68,614
Scour Slab Floor			75	5,620
Total	275	80	571	92,053
As-Built Total				

Bridge Railing 373 LF
 Approach Slab (SD 2.01) 1080 SF
 Deck Joint Assembly 3x3 Compression Seal, (SD 3.01) 77 LF
 Retaining Walls 335 LF

Revisions:



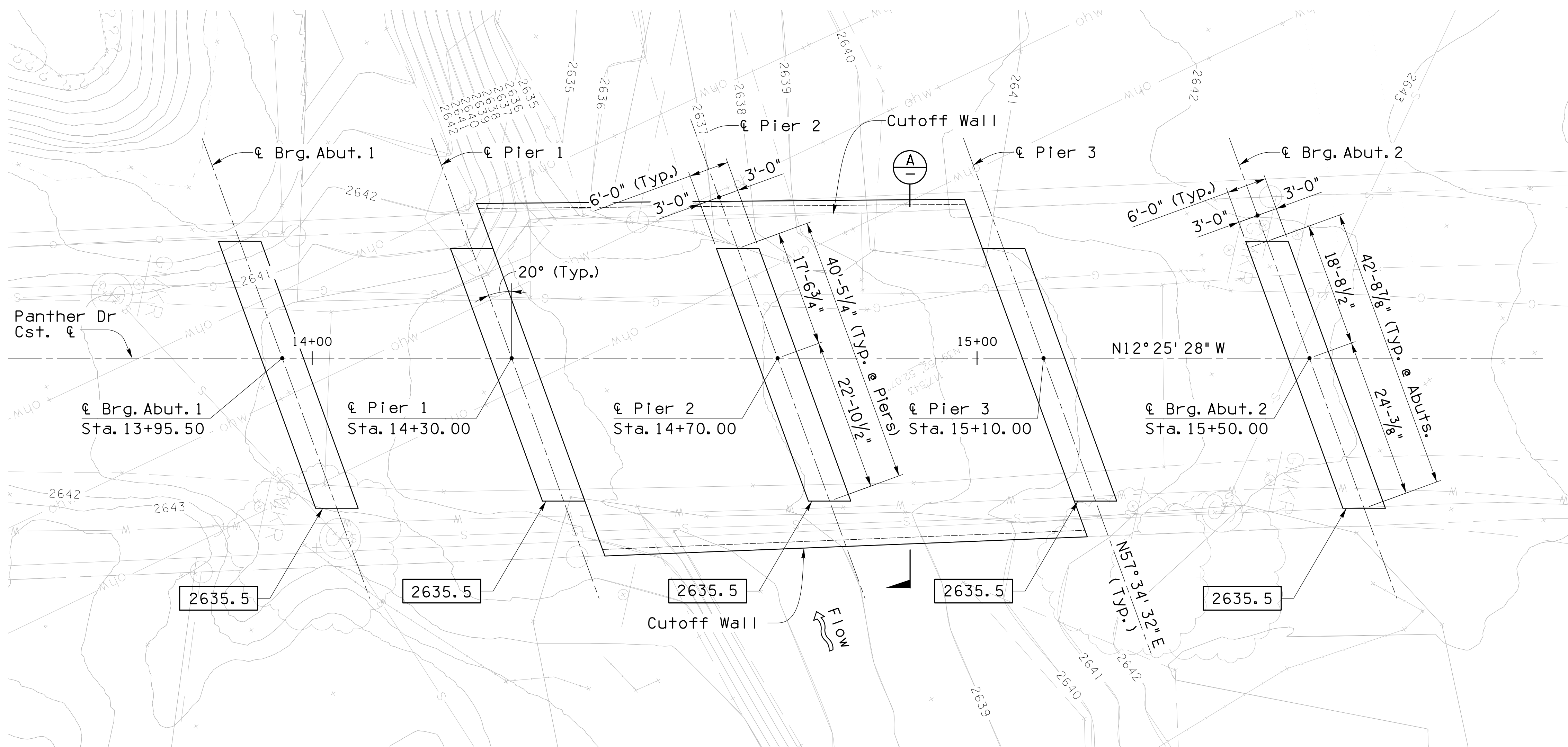
Designer: ESG
 Drawn by: JHS

100%
 NOT FOR CONSTRUCTION OR RECORDING

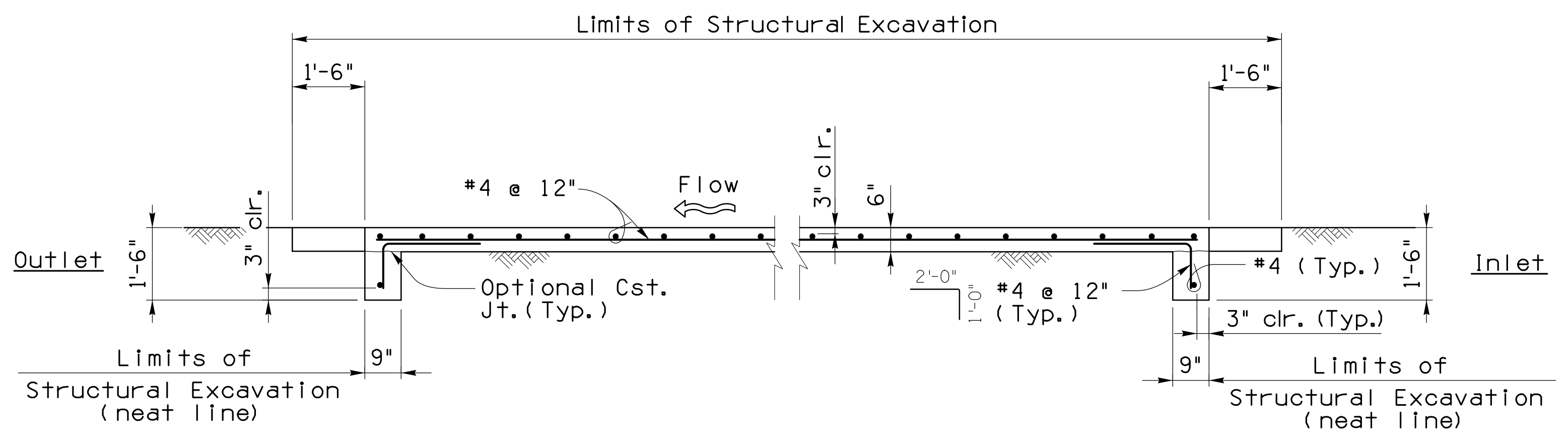
Job No.
23-0519

BR03

Sheet No.
19
 of 28



FOUNDATION LAYOUT
1" = 10'



FOUNDATION NOTES:

1. [XXXX.XX] Indicates bottom of footing elevation
2. For Geotechnical data refer to the Project Geotech Report prepared by Ninyo & Moore, dated July 30, 2024 for subgrade preparation.
3. Uniform Allowable Footing Bearing Pressures:
Strength Limit State net = 7.0 ksf
Total Settlement = <0.25 inch

Note:
Lap splice for #4 cont.
shall be 1'-3" min.

SECTION
1/2" = 1'-0" A

Project: _____

Revisions:

No.	Description

Call at least two full working days before you begin excavation.
ARIZONA
Professional Engineer
No. 1117 - 1480-0146-0117 (11/20/04)
in Maricopa County (002263-1100)

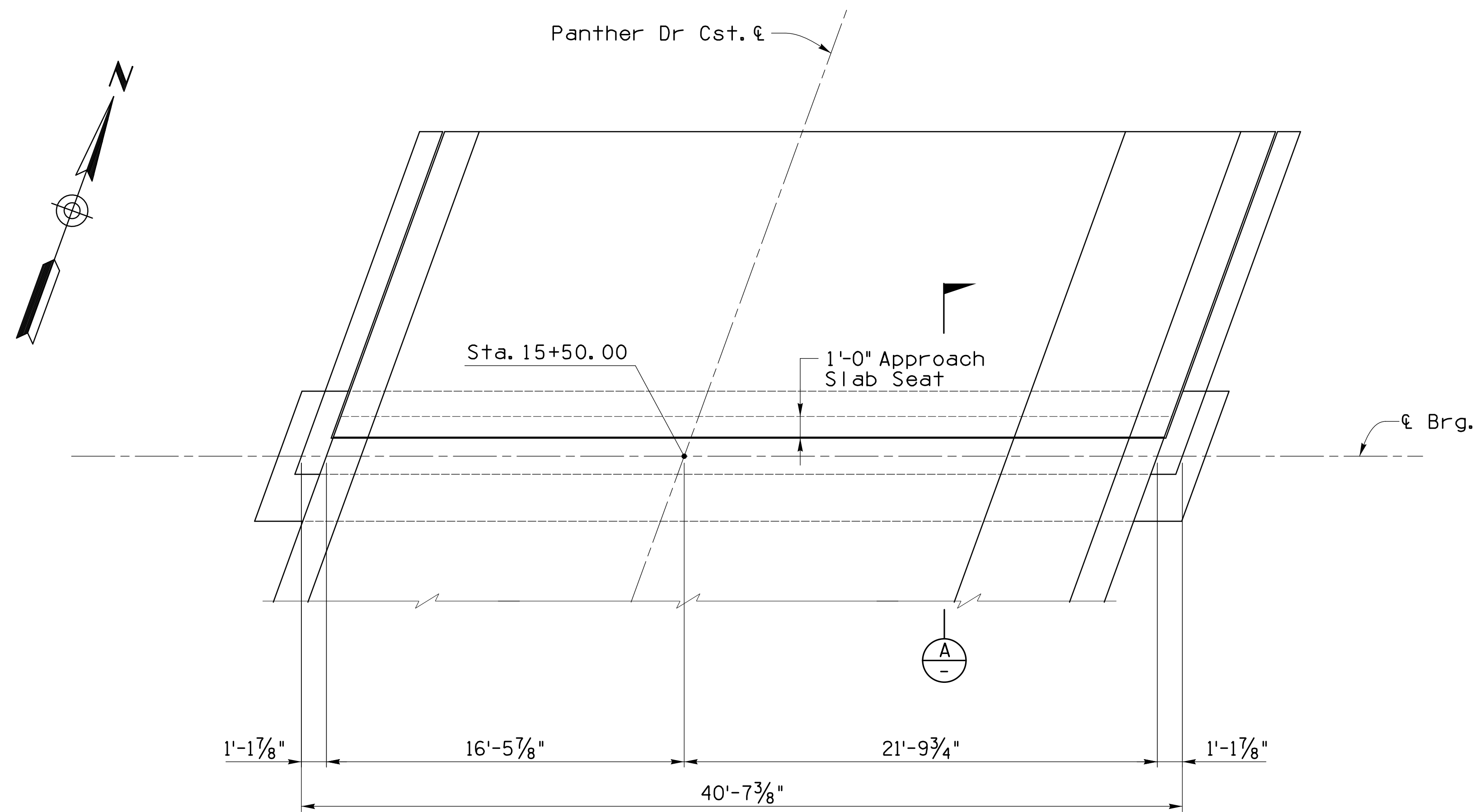
Designer: ESG
Drawn by: JHS

100%
NOT FOR
CONSTRUCTION
OR RECORDING

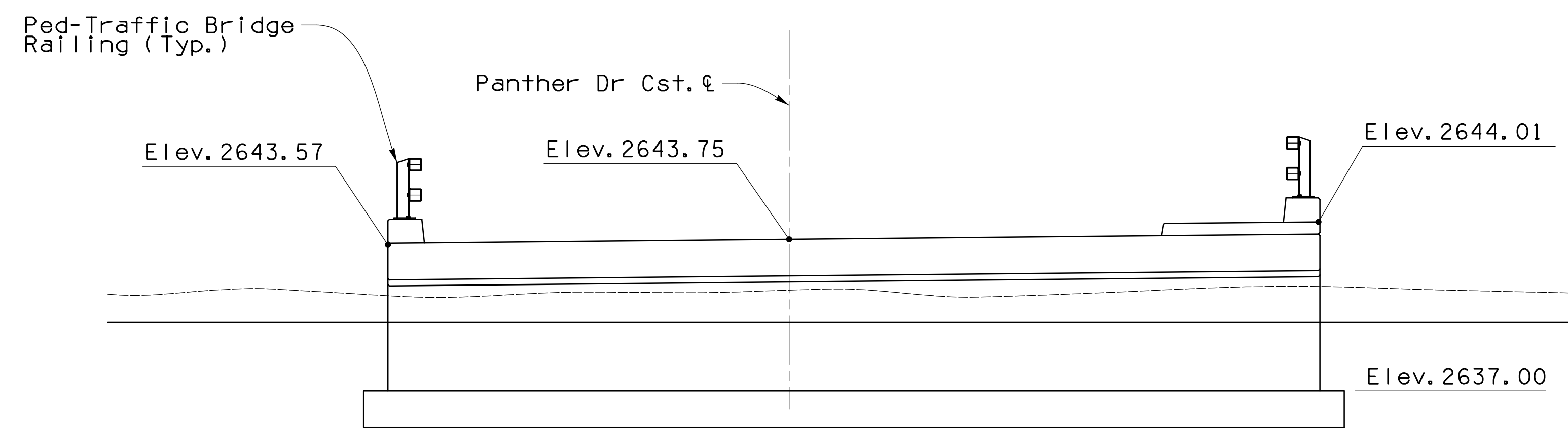
Job No.
23-0519

BR04

Sheet No.
20
of 28



PLAN - ABUTMENT 2
 $\frac{1}{4}'' = 1'-0''$



ELEVATION - ABUTMENT 2
 $\frac{1}{4}'' = 1'-0''$

Revisions:

No.	Description

Call at least two full working days before you begin excavation.
ARIZONA 811
 One Call for All Utilities (1-800-4-A-STATE)
 In Maricopa County: (602)263-1100

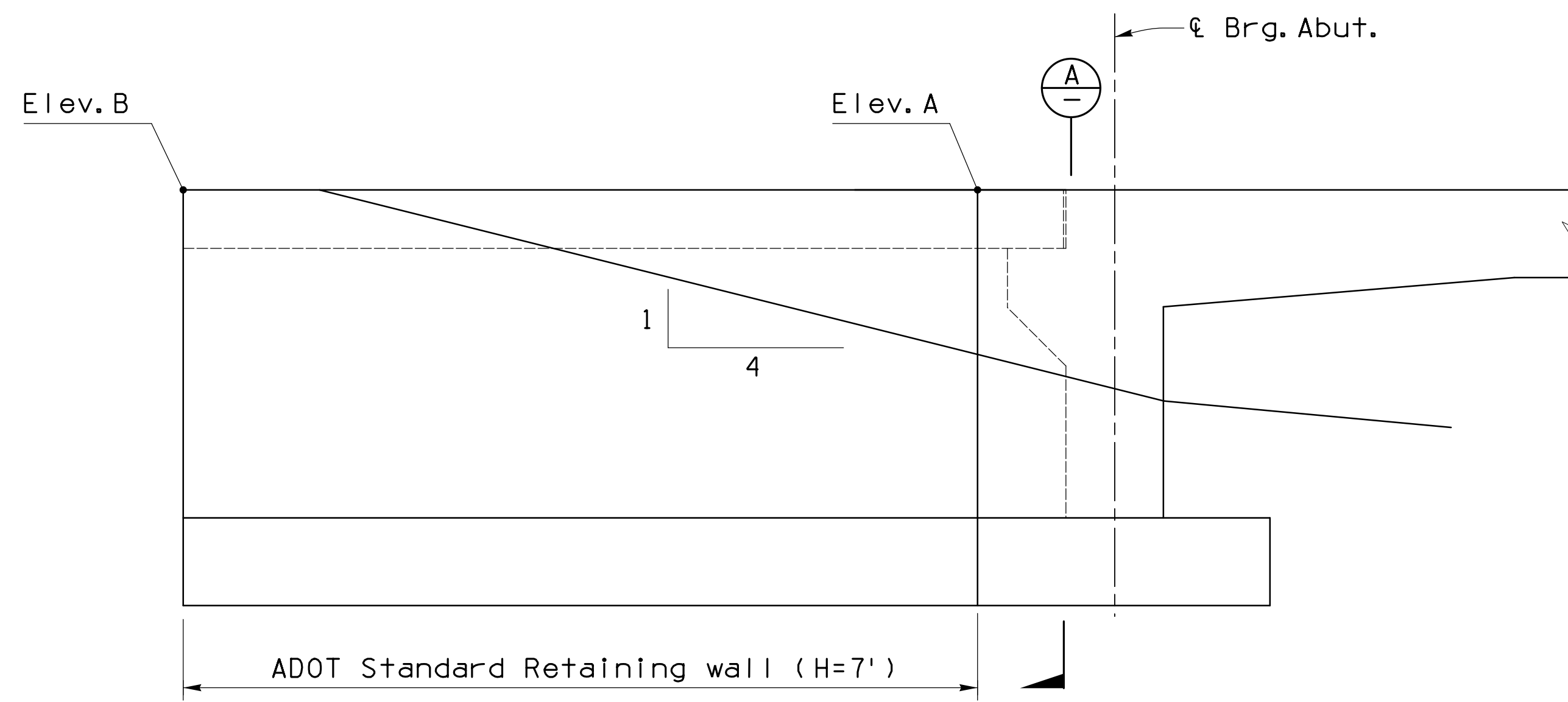
Designer: ESG
 Drawn by: JHS

100%
 NOT FOR
 CONSTRUCTION
 OR RECORDING

Job No.
23-0519

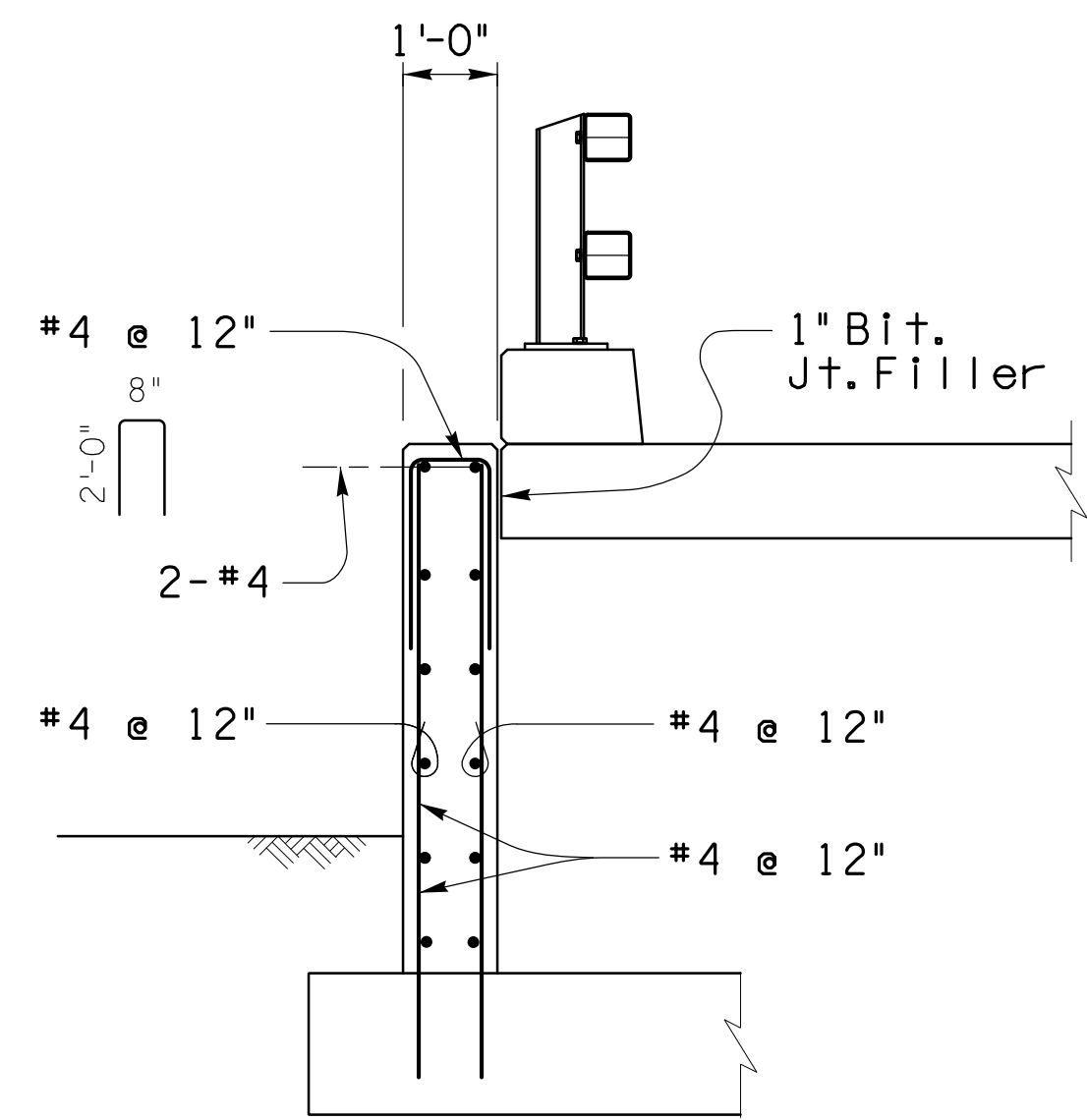
BR06

Sheet No.
22
 of 28



RETAINING WALL ELEVATION
 $\frac{1}{2}'' = 1'-0''$

LOOKING UPSTATION	RETAINING WALL	
	ELEV. A	ELEV. B
ABUT. 1 LT	2643.51	2643.51
ABUT. 1 RT	2643.87	2643.87
ABUT. 2 LT	2643.58	2643.67
ABUT. 2 RT	2644.03	2644.16



WINGWALL SECTION
 $\frac{1}{2}'' = 1'-0''$

Project:

Revisions:



Designer: ESG
 Drawn by: JHS

100%
 NOT FOR
 CONSTRUCTION
 OR RECORDING

Job No.
23-0519

BR07

Sheet No.
23
 of 28

