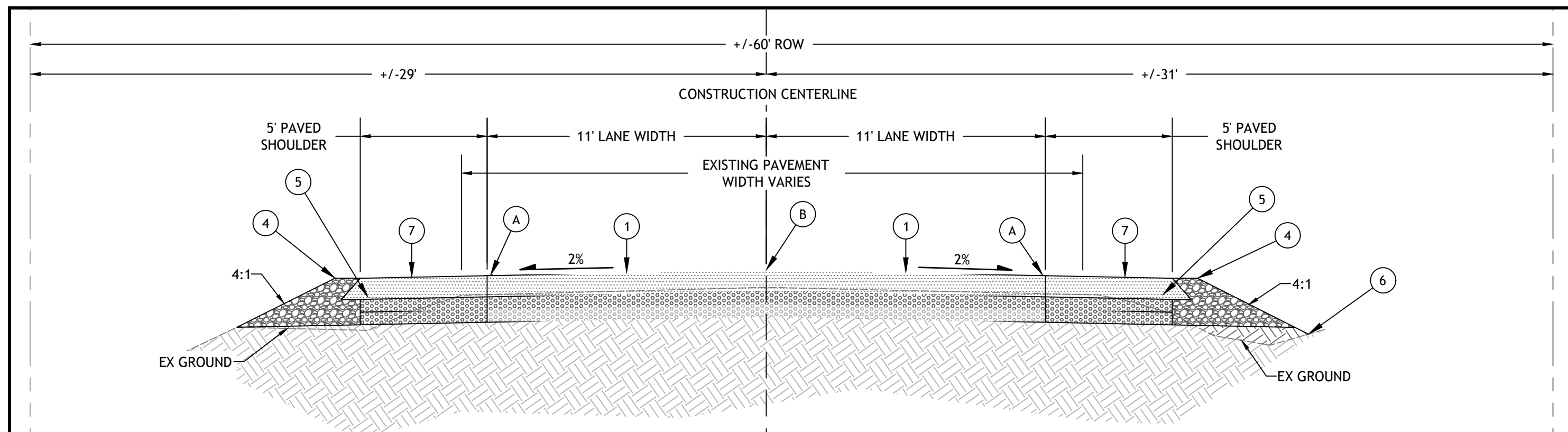
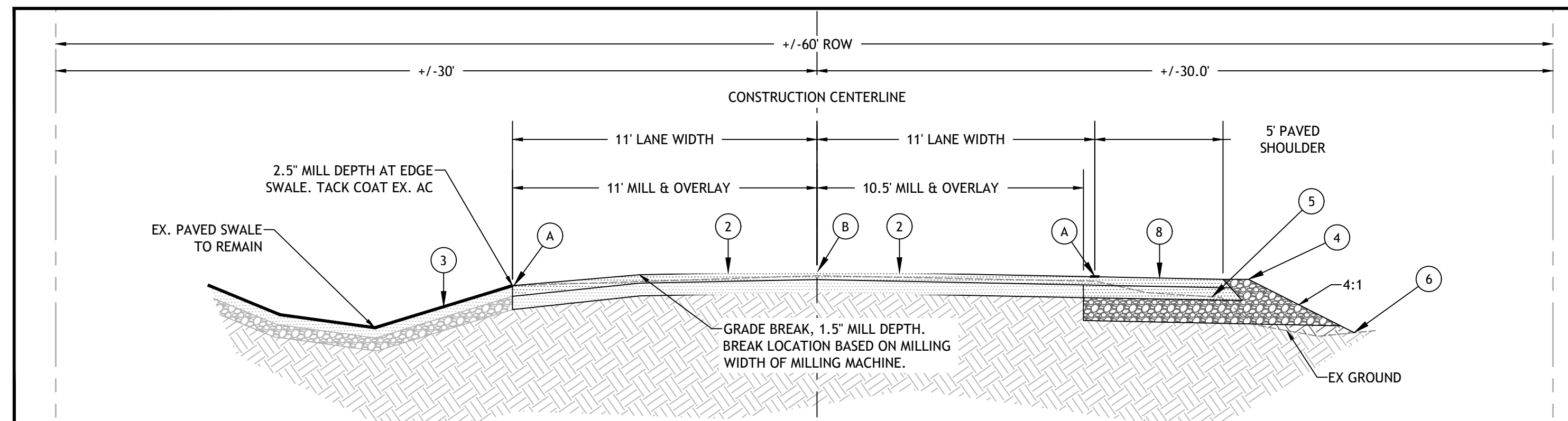


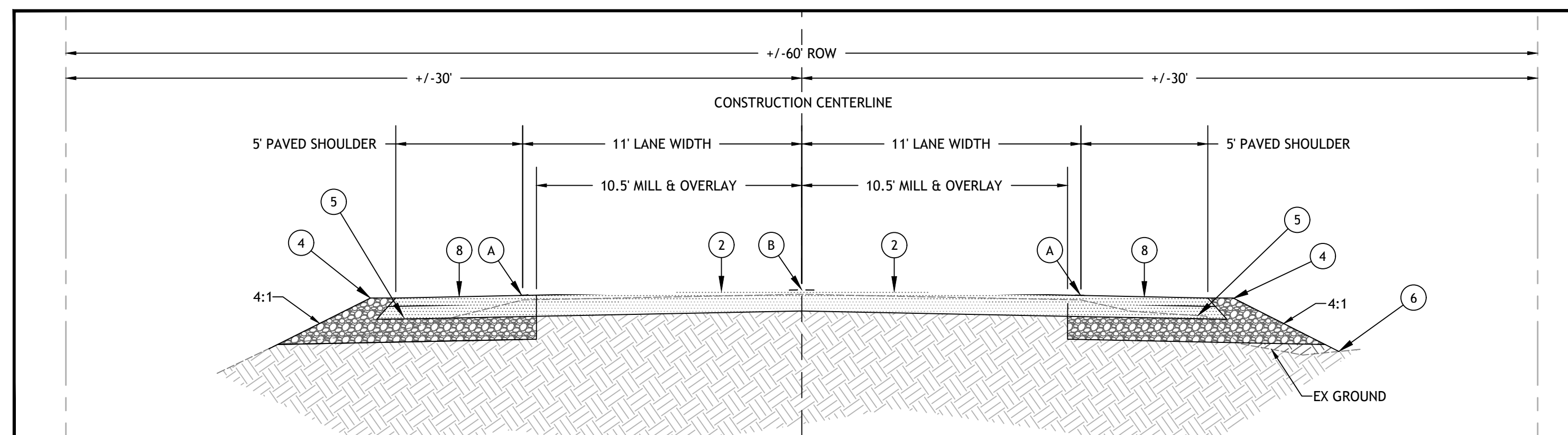
S SOUTH SECTION (YANCEY TO SILVER SADDLE)
NOT TO SCALE



C CENTRAL SECTION (SILVER SADDLE TO NEPTUNE)
NOT TO SCALE



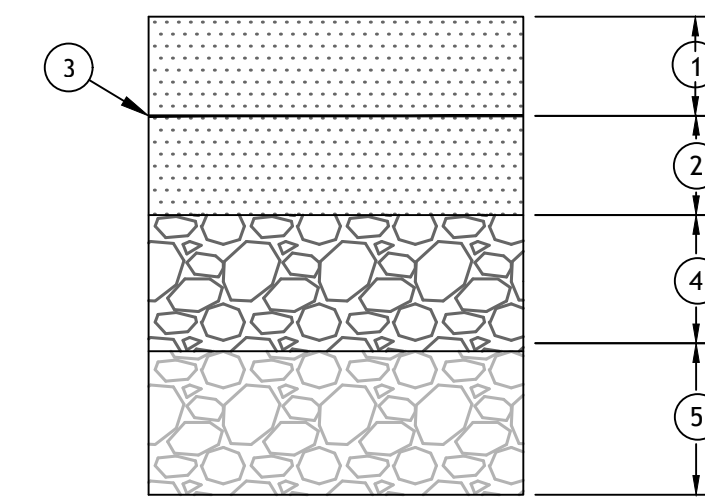
N1 NORTH SECTION (NEPTUNE TO WENDY'S WAY)
NOT TO SCALE



N2 NORTH SECTION (WENDY'S WAY TO MCGEE)
NOT TO SCALE

TYPICAL SECTION KEYNOTES

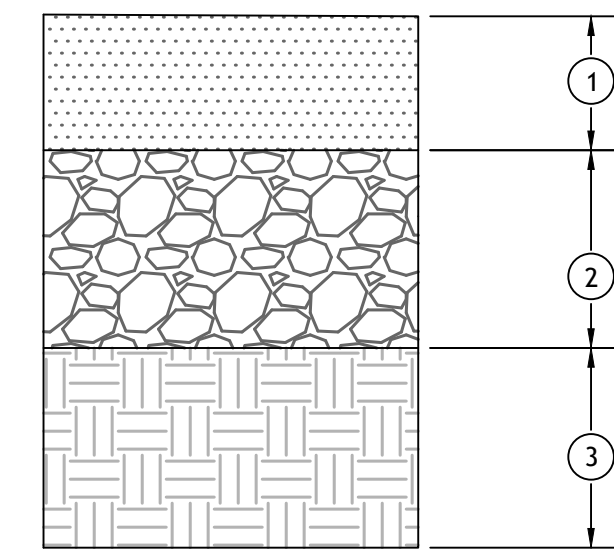
- 1 4" AC / 2" NEW ABC / 3" EX. ABC PER DETAIL 1.
- 2 1.5" MILL / 2.5" OVERLAY PER DETAIL 2
- 3 FOG SEAL AND CRACK SEAL PER SPECIFICATIONS.
- 4 1" SHOULDER (ABC OR MILLINGS, 95% COMPACTION PER MAG SPEC. 310).
- 5 SAFETY EDGE PER MAG STD. DET. 201 (TYP).
- 6 3" SWALE WHERE SHOWN ON THE PLANS PER DETAIL 4.
- 7 4" AC / 5" RAP MILLINGS, 2" MINUS PER DETAIL 5.
- 8 3" AC / 5" RAP MILLINGS, 2" MINUS PER DETAIL 6.
- A WHITE LANE STRIPE.
- B DOUBLE YELLOW LANE STRIPE.



KEYNOTES

- 1 2" ASPHALTIC CONCRETE; 3/4" MIX, PG 64-28TR+ PER SPECS.
- 2 2" ASPHALTIC CONCRETE; 3/4" MIX, PG 64-28TR+ PER SPECS.
- 3 BITUMINOUS TACK COAT PER PROJECT SPECS.
- 4 2" NEW AGGREGATE BASE COURSE. 100% COMPACTION PER MAG SPEC. 310.
- 5 3" EX AGGREGATE BASE COURSE. SCARIFY, MOISTURE CONDITION & 100% COMPACTION.

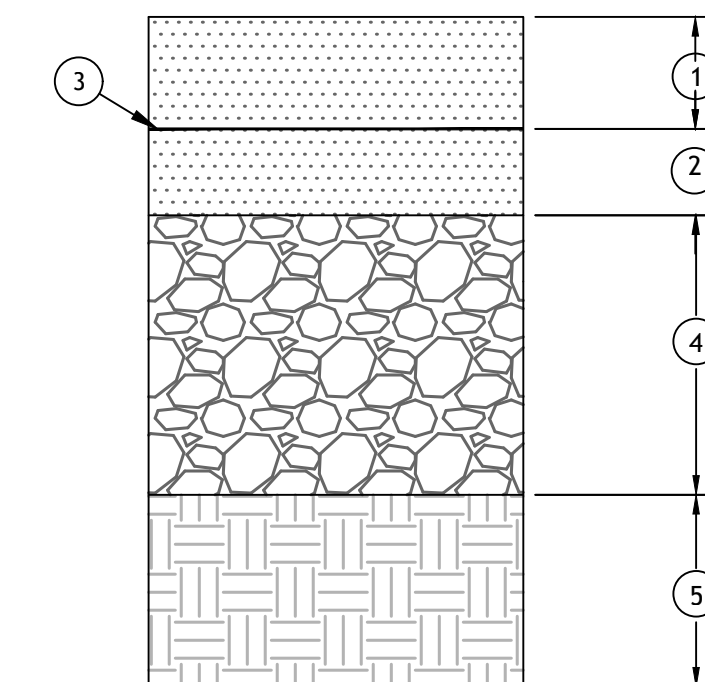
1 4" AC / 2" ABC / 3" EX ABC
NOT TO SCALE



KEYNOTES

- 1 3" THICK ASPHALT, 3/4" MIX, PG 64-28TR+ PER SPECS.
- 2 4" AGGREGATE BASE COURSE. 100% COMPACTION PER MAG SPEC. 310. OR 4" RAP MILLINGS.
- 3 8" SUBGRADE PREPARATION PER MAG SPEC. 310, 95% COMPACTION.

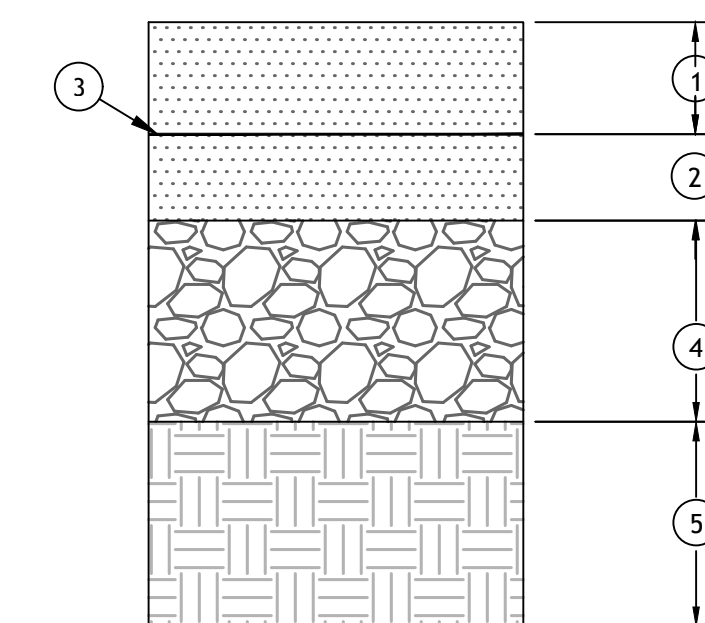
3 3" AC / 4" ABC
NOT TO SCALE



KEYNOTES

- 1 2" ASPHALTIC CONCRETE; 3/4" MIX, PG 64-28TR+ PER SPECS.
- 2 2" ASPHALTIC CONCRETE; 3/4" MIX, PG 64-28TR+ PER SPECS.
- 3 BITUMINOUS TACK COAT PER PROJECT SPECS.
- 4 5" RAP MILLINGS, 2" MINUS, MOISTURE CONDITION & 100% COMPACTION.
- 5 8" SUBGRADE PREPARATION PER MAG SPEC. 310, 95% COMPACTION.

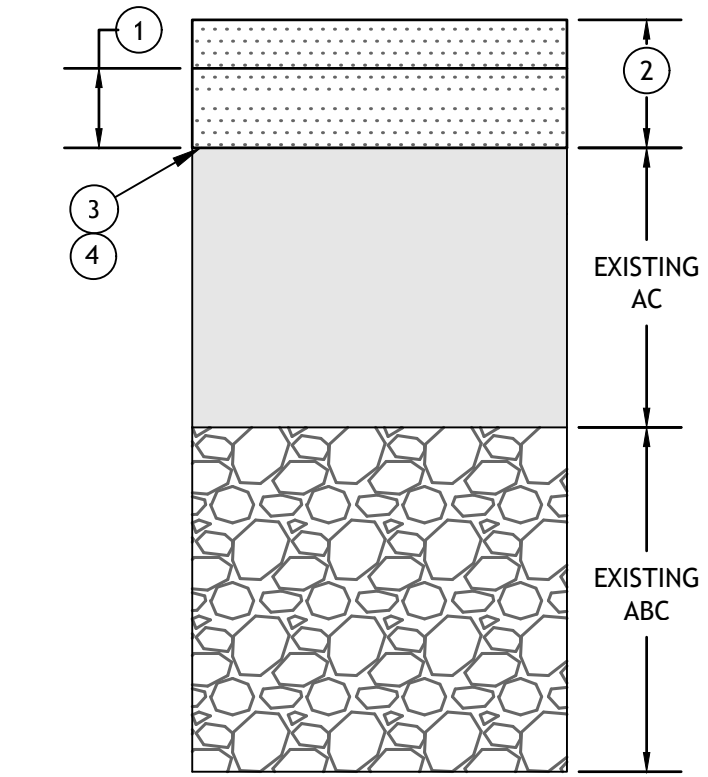
5 4" AC / 5" RAP MILLINGS
NOT TO SCALE



KEYNOTES

- 1 2" ASPHALTIC CONCRETE; 3/4" MIX, PG 64-28TR+ PER SPECS.
- 2 2" ASPHALTIC CONCRETE; 3/4" MIX, PG 64-28TR+ PER SPECS.
- 3 BITUMINOUS TACK COAT PER PROJECT SPECS.
- 4 5" AGGREGATE BASE COURSE. 100% COMPACTION PER MAG SPEC. 310.
- 5 8" SUBGRADE PREPARATION PER MAG SPEC. 310, 95% COMPACTION.

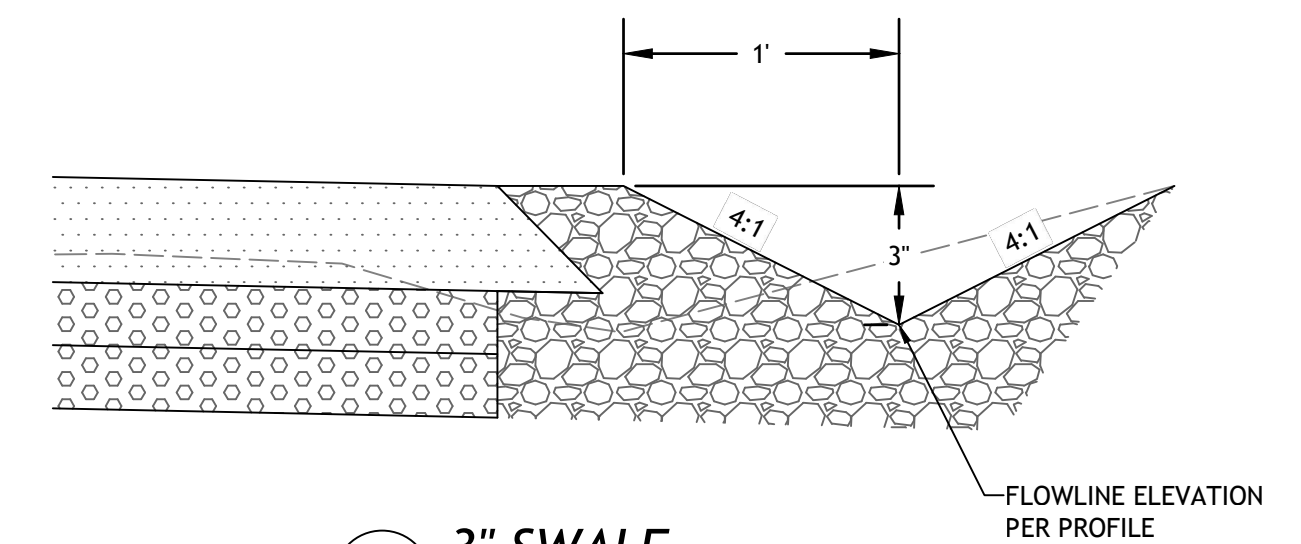
7 4" AC / 5" ABC
NOT TO SCALE



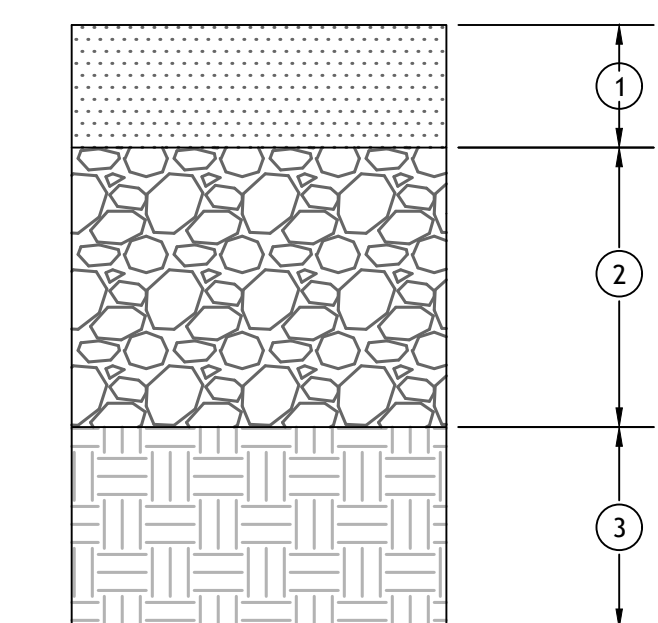
KEYNOTES

- 1 MILL 1.5" FROM TOP OF THE EXISTING PAVEMENT.
- 2 2.5" THICK ASPHALT, 3/4" MIX, PG 64-28TR+ PER SPECS.
- 3 BITUMINOUS TACK COAT ABOVE ALL MILLED SURFACES PER SPECS.
- 4 AFTER MILLING BEFORE PAVING; REPAIR AND SEAL CRACKS > 1.5" PER DETAIL E; REMOVE AND PATCH ASPHALT PER DETAIL C.

2 PAVEMENT SECTION FOR MILL & FILL
NOT TO SCALE



4 3" SWALE
NOT TO SCALE



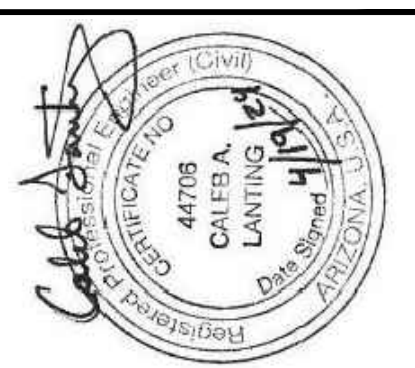
KEYNOTES

- 1 3" ASPHALTIC CONCRETE; 3/4" MIX, PG 64-28TR+ PER SPECS.
- 2 5" RAP MILLINGS, 2" MINUS, MOISTURE CONDITION & 100% COMPACTION.
- 3 8" SUBGRADE PREPARATION PER MAG SPEC. 310, 95% COMPACTION.

6 3" AC / 5" RAP MILLINGS
NOT TO SCALE

DATE	DESCRIPTION	REVISION

201 E BIRCH AVE. SUITE 3
Flagstaff, AZ 86001
(928) 774-4046



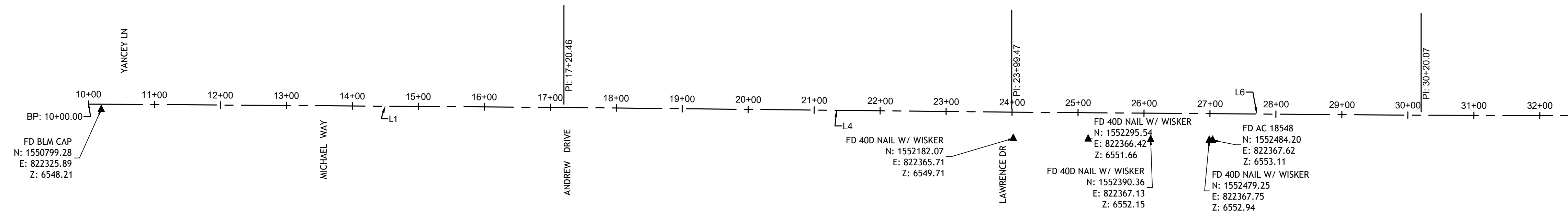
COCONINO COUNTY PUBLIC WORKS
STARDUST TRAIL ROAD WIDENING AND RECONSTRUCTION DETAILS

BY: CBW/DCW
CHECKED: CAL

JOB NO: 23CC01
DATE: APRIL 2024

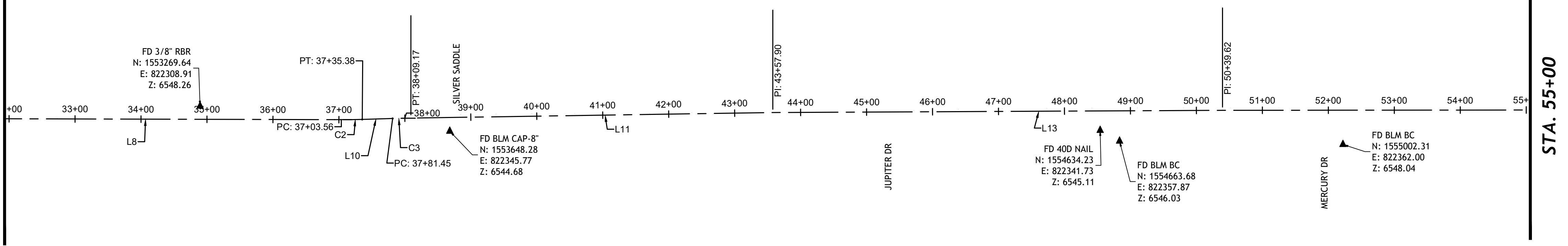
C1.2

PLAN VIEW
SCALE 1" = 100'



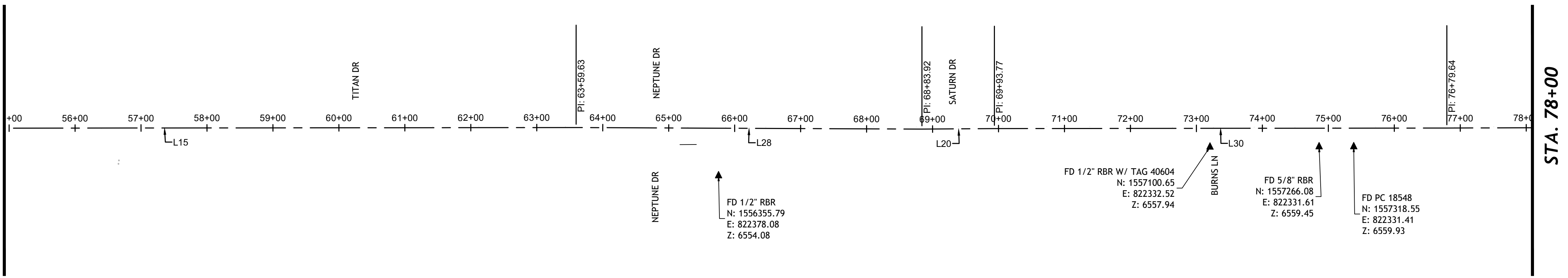
STA. 32+00

PLAN VIEW
SCALE 1" = 100'



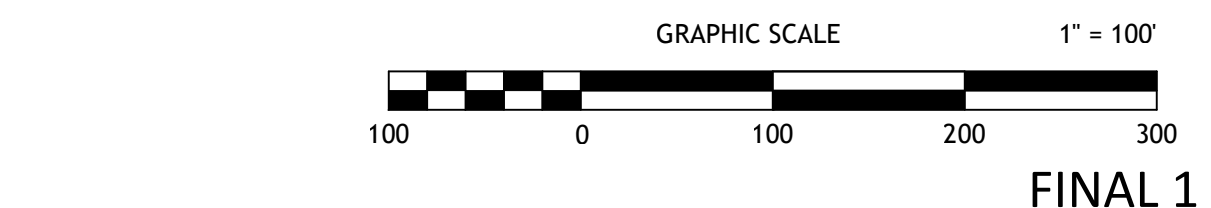
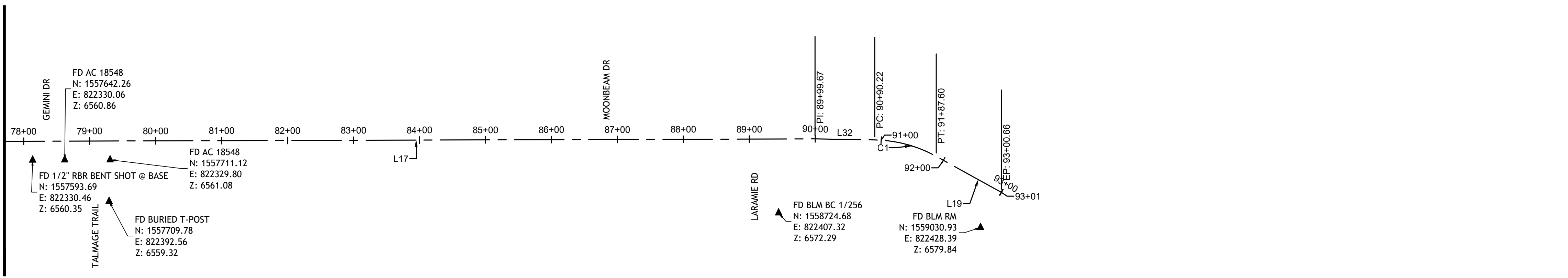
STA. 55+00

PLAN VIEW
SCALE 1" = 100'



STA. 78+00

PLAN VIEW
SCALE 1" = 100'



COORDINATE SYSTEM DETAILS
PROJECT TOPOGRAPHIC SURVEY WAS PROVIDED BY NORTHLAND EXPLORATION SURVEY, JULY 2022.

A NOTE ON BASIS OF BEARING AND COORDINATE SYSTEM:
LINEAR UNIT: INTERNATIONAL FOOT
GEODETIC DATUM: NORTH AMERICAN DATUM 1983
SYSTEM: ARIZONA STATE PLANE COORDINATE (SPCS 83 AZ C, 202)

PROJECTION: TRANSVERSE MERCATOR
LATITUDE OF GRID ORIGIN: 31° 00' 00" N
LONGITUDE OF CENTRAL MERIDIAN: 111° 55' 00" W
NORTHING AT GRID ORIGIN: 0.000 FT
EASTING AT CENTRAL MERIDIAN: 700,000.000 FT.
CENTRAL MERIDIAN SCALE FACTOR: 0.9999 (EXACT)

ALL DISTANCES AND BEARINGS SHOWN HEREON ARE GRID VALUES BASED ON THE PRECEDING PROJECTION DEFINITION.

THE BASIS OF BEARINGS IS GEODETIC NORTH BASED ON GPS MEASUREMENTS. THESE BEARINGS HAVE BEEN ROTATED TO GRID FOR THE ARIZONA CENTRAL STATE PLANE ZONE. ALL BEARINGS AND DISTANCES SHOWN ON THIS MAP ARE GRID PER THE PRECEDING DEFINITION.

DATUM: THE MAIN BENCHMARK IS A REBAR IN A HANDHOLE DENOTED AS "DP-2", HAVING AN ELEVATION OF 6,571.74 AND THE DATUM IS NAVD88. INFORMATION RECEIVED FROM COCONINO COUNTY PUBLIC WORKS.

LINE DATA					
SEGMENT	BEARING	LENGTH	START	END	
L1	N00° 14' 35.15"E	720.46	(1550780.20,822317.67)	(1551500.65,822320.73)	
L4	N00° 26' 28.45"E	679.01	(1551500.65,822320.73)	(1552179.64,822325.96)	
L6	N00° 16' 13.45"E	620.60	(1552179.64,822325.96)	(1552800.23,822328.89)	
L8	N00° 00' 38.98"W	683.49	(1552800.23,822328.89)	(1553483.73,822328.76)	
L10	N01° 50' 02.51"W	46.06	(1553515.54,822328.25)	(1553561.58,822326.77)	
L11	N01° 02' 23.18"W	548.73	(1553589.30,822326.08)	(1554137.94,822316.12)	
L13	N00° 26' 31.76"W	681.72	(1554137.94,822316.12)	(1554819.64,822310.86)	
L15	N00° 13' 21.73"W	1320.01	(1554819.64,822310.86)	(1556139.64,822305.73)	
L17	N00° 19' 58.96"W	1320.02	(1557459.64,822320.74)	(1558779.64,822295.07)	
L19	N28° 43' 41.04"E	113.07	(1558963.41,822320.98)	(1559062.56,822375.32)	
L20	N00° 33' 36.48"W	109.85	(1556663.93,822306.61)	(1556773.77,822305.53)	
L28	N00° 05' 46.41"E	524.29	(1556139.64,822305.73)	(1556663.93,822306.61)	
L30	N00° 14' 01.02"W	685.87	(1556773.77,822305.53)	(1557459.64,822302.74)	
L32	N00° 49' 57.21"E	90.55	(1558779.64,822295.07)	(1558870.18,822296.38)	

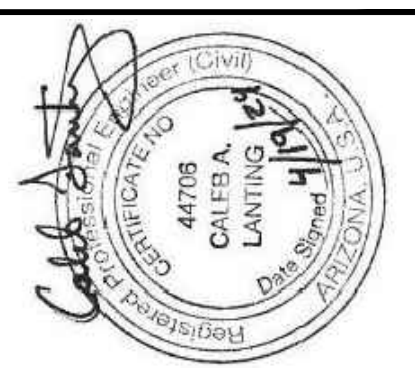
CURVE DATA					
CURVE	DELTA	RADIUS	LENGTH	CHORD	TANGENT
C1	N14° 46' 49.13"E	200.00	97.37	96.41	49.67
C2	N00° 55' 20.75"W	1000.00	31.82	31.82	15.91
C3	N01° 26' 12.84"W	2000.00	27.72	27.72	13.86

SURVEY MONUMENTS

- CONTRACTOR IS RESPONSIBLE FOR THE PRESERVATION OF ALL SURVEY MONUMENTS AND PROPERTY CORNERS. ANY MONUMENTS AND/OR CORNERS WHICH ARE DISTURBED OR DISPLACED DUE TO CONSTRUCTION ACTIVITIES SHALL BE RESET BY THE CONTRACTOR AT NO EXPENSE TO THE OWNER NOR THE ENGINEER. THE LOCATION OF THESE MONUMENTS SHALL BE ESTABLISHED BY A REGISTERED LAND SURVEYOR LICENSED IN THE STATE OF ARIZONA.
- SURVEY MONUMENTS MUST BE PRESERVED IN THEIR ORIGINAL POSITIONS. THESE MONUMENTS INCLUDE, BUT ARE NOT LIMITED TO, SECTIONAL CORNERS, RIGHT-OF-WAY, AND CENTERLINE MONUMENTS AS WELL AS GEODETIC CONTROL MONUMENTS ESTABLISHED BY THE NGS, USCGS, USGS, ADOT AND COCONINO COUNTY. ANY SURVEY MONUMENTS DISTURBED DURING THE EXECUTION OF THE PERMIT SHALL BE REPLACED IMMEDIATELY AT NO COST TO THE COUNTY (REFER TO DTL G, DWG NO DT02). THE RELEVANT STANDARDS AND PROCEDURES ESTABLISHED BY THE ARIZONA STATE OF TECHNICAL REGISTRATION, ARIZONA REVISED STATUTES, THE US DEPARTMENT OF THE INTERIOR'S MANUAL OF INSTRUCTIONS FOR THE SURVEY OF PUBLIC LANDS, THE NATIONAL GEODETIC SURVEY AND COCONINO COUNTY'S POLICY WILL BE ADHERED TO WHEN RE-SETTING SURVEY MONUMENTS. THE PERMITEE SHALL MARK AND INSPECT MONUMENTS FOR DAMAGE PRIOR TO ANY PERMITTED WORK. THE PERMITEE SHALL NOTIFY THE COUNTY IMMEDIATELY UPON DISCOVERY OF OR DAMAGE TO ANY SURVEY MONUMENTS. IF EXISTING DAMAGE IS FOUND THE PERMITEE SHALL CONTACT THE COUNTY IMMEDIATELY TO ELIMINATE LIABILITY.
- NO JOB WILL BE CONSIDERED COMPLETE BY THE COUNTY UNTIL ALL SURVEY MONUMENTS ARE INSTALLED AND STAMPED.



201 E BIRCH AVE. SUITE 3
Flagstaff, AZ 86001
(928) 774-4046



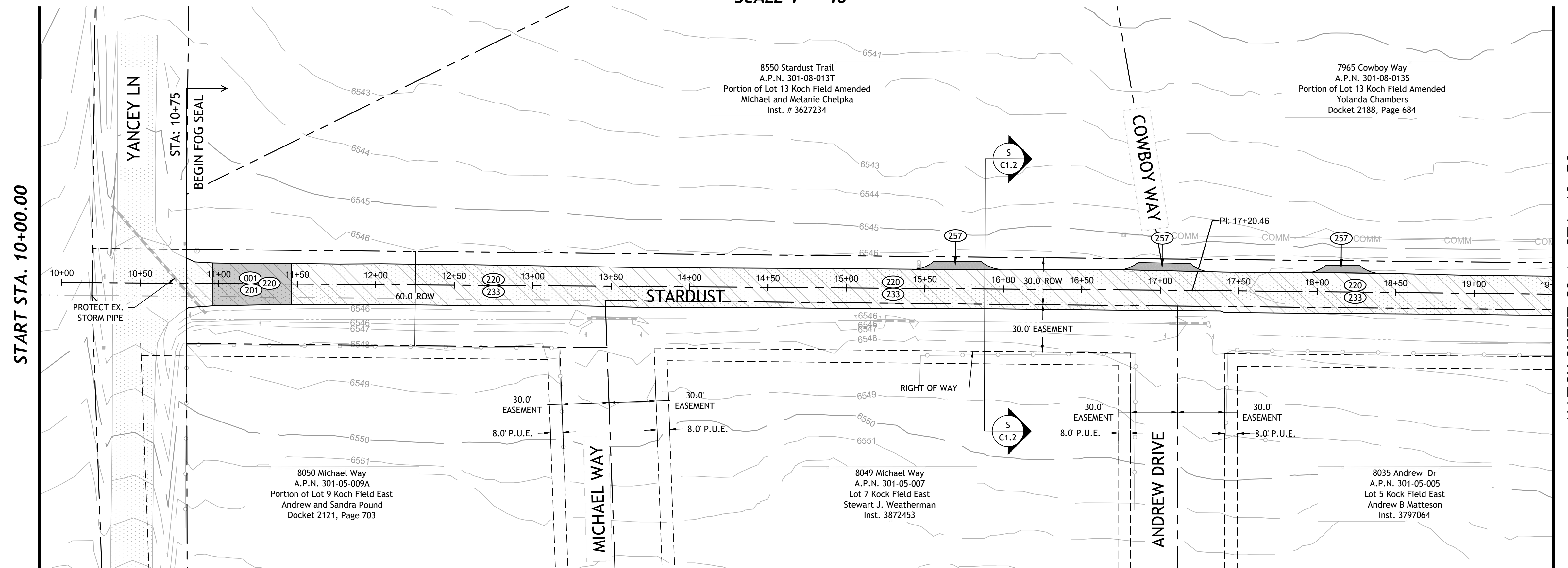
**COCONINO COUNTY PUBLIC WORKS
STARDUST TRAIL ROAD WIDENING
AND RECONSTRUCTION
HORIZONTAL CONTROL**

HC1.0

JOB NO: 23CC01
DATE: APRIL 2024

BY: CBW/DCW
CHECKED: CAL

PLAN VIEW
SCALE 1" = 40'



MATCH SHEET C2.1 - STA. 19+50

START STA. 10+00.00

CONSTRUCTION NOTES

REMOVALS (000)

001 148 SY
Sawcut and remove asphalt.

NEW CONSTRUCTION (200)

201 148 SY
4" AC / 2" New ABC / 3" Ex. ABC per Detail 1, Sheet C1.2. Match existing roadway width and slope. Free edges include Type B pavement edge and milling shoulder build up. Locations are shown approximate, mark location in the field for approval for approval by Coconino County.

220 2,473 SY
Fog seal per typical sections Sheet C1.2.

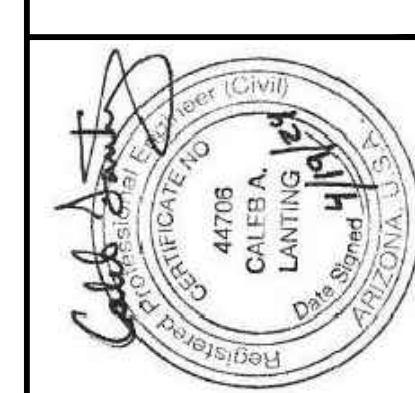
233 2,474 SY (ALLOWANCE)
Prior to fog sealing, seal cracks between 1/4" -1.5" per MAG Spec. 337.

257 3 EA
Millings driveway apron, 5' deep x driveway width, 95% compaction.



REVISION	DESCRIPTION	DATE

201 E BIRCH AVE. SUITE 3
Flagstaff, AZ 86001
(928) 774-4046

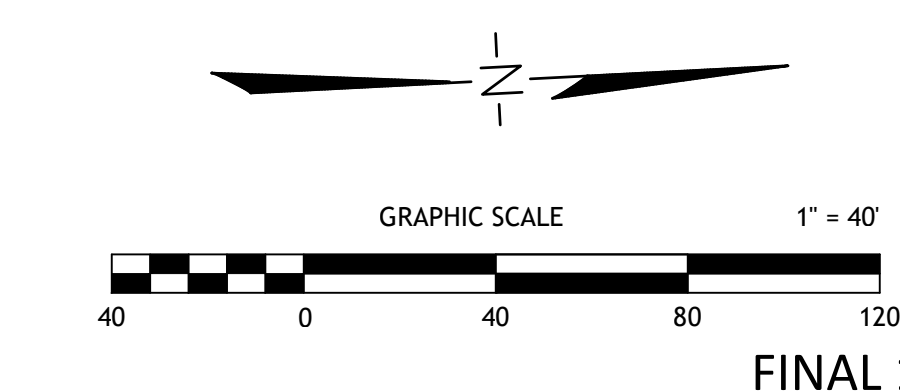


COCONINO COUNTY PUBLIC WORKS
STARDUST TRAIL ROAD WIDENING
AND RECONSTRUCTION
PLAN & PROFILE STA.
10+00 TO 19+50

JOB NO: 23CC01
DATE: APRIL 2024

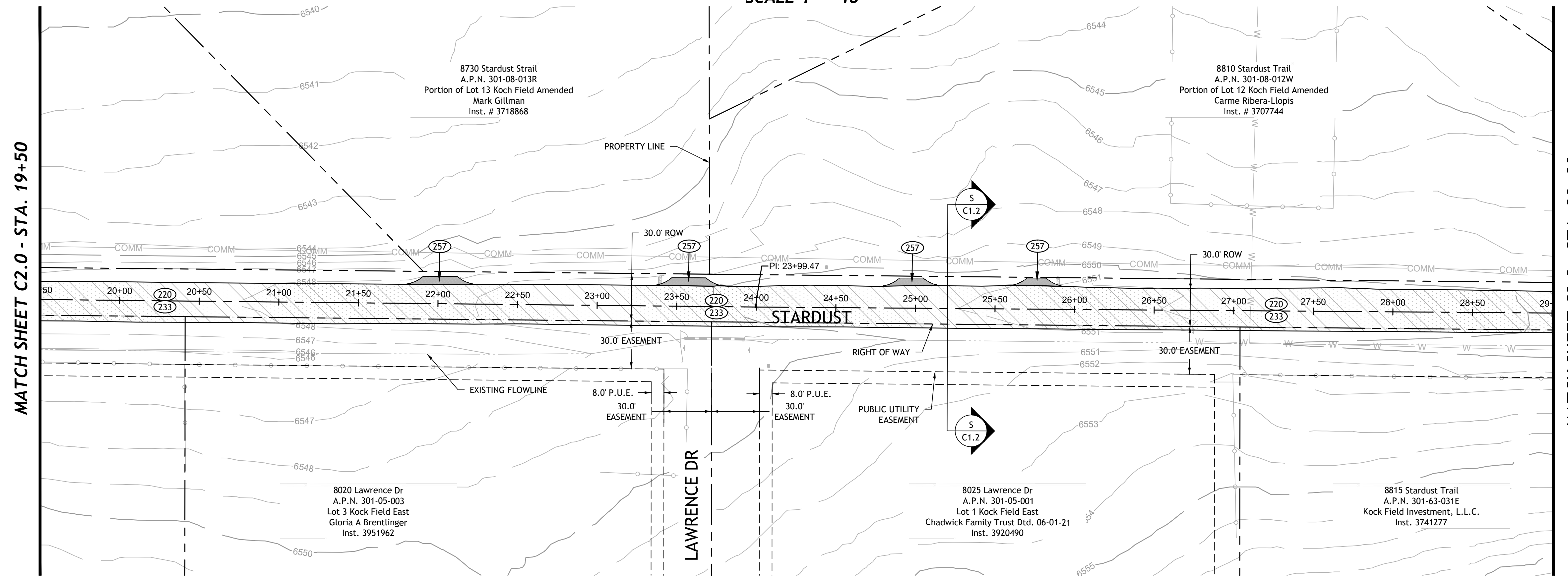
BY: CBW/DCW
CHECKED: CAL

C2.0



FINAL 1

PLAN VIEW
SCALE 1" = 40'



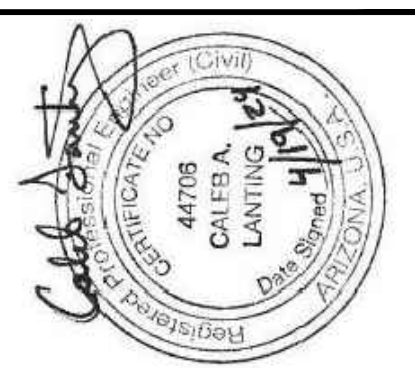
CONSTRUCTION NOTES

- NEW CONSTRUCTION (200)**
 220 2,720 SY
 Fog seal per typical sections Sheet C1.2.
 233 2,720 SY (ALLOWANCE)
 Prior to fog sealing, seal cracks between 1/4" - 1.5" per MAG Spec. 337.
 257 4 EA
 Millings driveway apron, 5' deep x driveway width, 95% compaction.



REVISION	DESCRIPTION	DATE

201 E BIRCH AVE. SUITE 3
 Flagstaff, AZ 86001
 (928) 774-4046

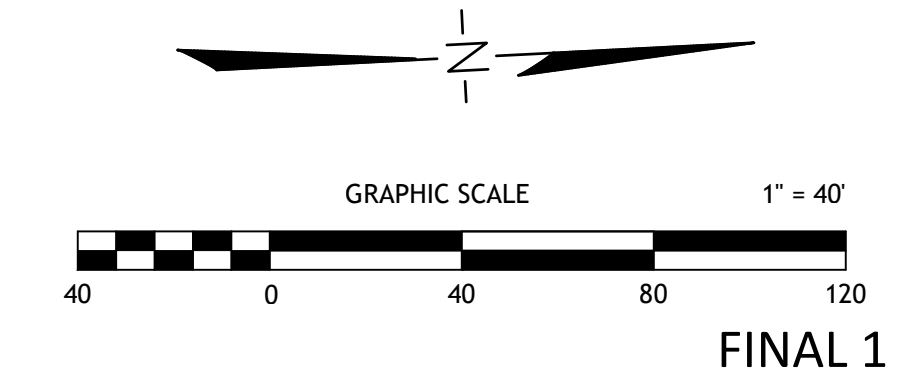


COCONINO COUNTY PUBLIC WORKS
STARDUST TRAIL ROAD WIDENING
AND RECONSTRUCTION
PLAN & PROFILE STA.
19+50 TO 29+00

JOB NO: 23CC01
 DATE: APRIL 2024

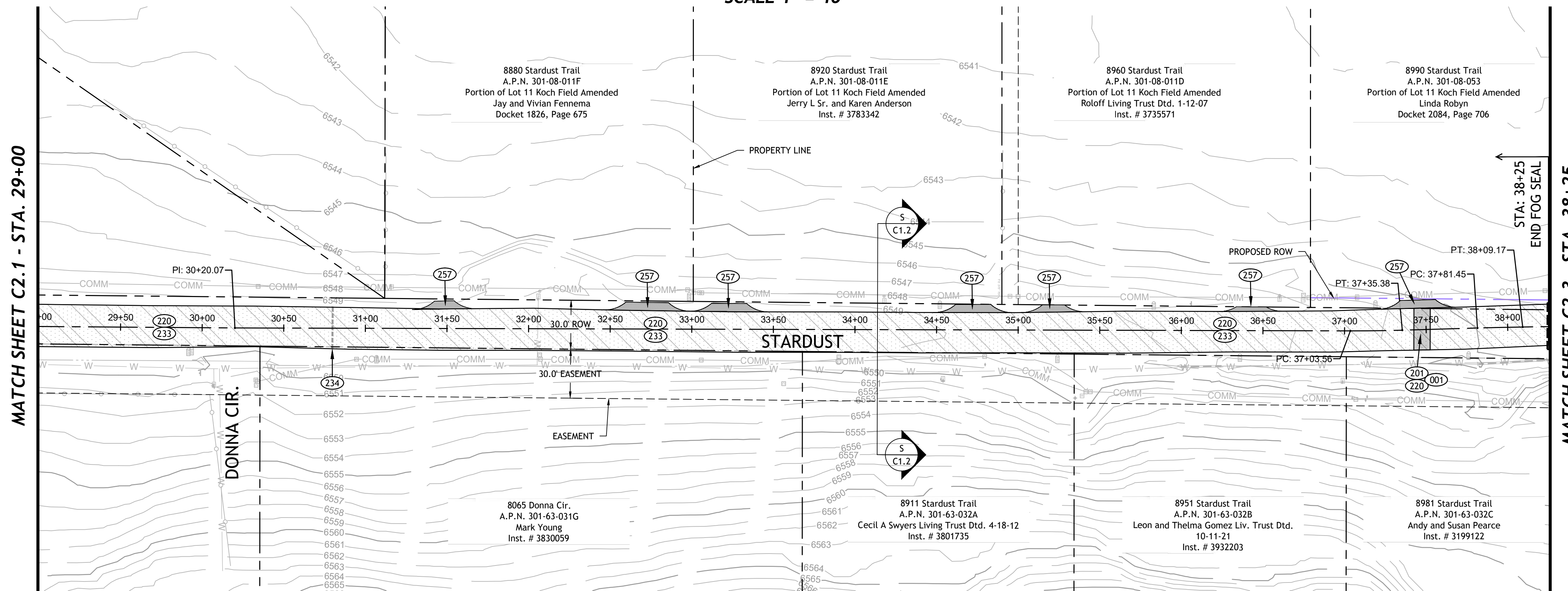
BY: CBW/DCW
 CHECKED: CAL

C2.1



FINAL 1

PLAN VIEW
SCALE 1" = 40'



CONSTRUCTION NOTES

REMOVALS (000)

001 29 SY
Sawcut and remove asphalt.

NEW CONSTRUCTION (200)

201 29 SY
4" AC / 2" New ABC / 3" Ex. ABC per Detail 1, Sheet C1.2. Match existing roadway width and slope. Free edges include Type B pavement edge and milling shoulder build up. Locations are shown approximate, mark location in the field for approval by Coconino County.

220 2.590 SY
Fog seal per typical sections Sheet C1.2.

233 2.591 SY (ALLOWANCE)
Prior to fog sealing, seal cracks between 1/4" -1.5" per MAG Spec. 337.

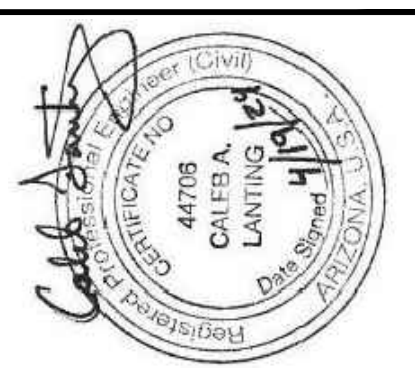
234 20 LF (ALLOWANCE)
Prior to fog sealing, mill and fill cracks between ≥1.5" per Detail E, Sheet C1.3.

257 7 EA
Millings driveway apron, 5' deep x driveway width, 95% compaction.



REVISION	DESCRIPTION	DATE

201 E BIRCH AVE, SUITE 3
Flagstaff, AZ 86001
(928) 774-4046

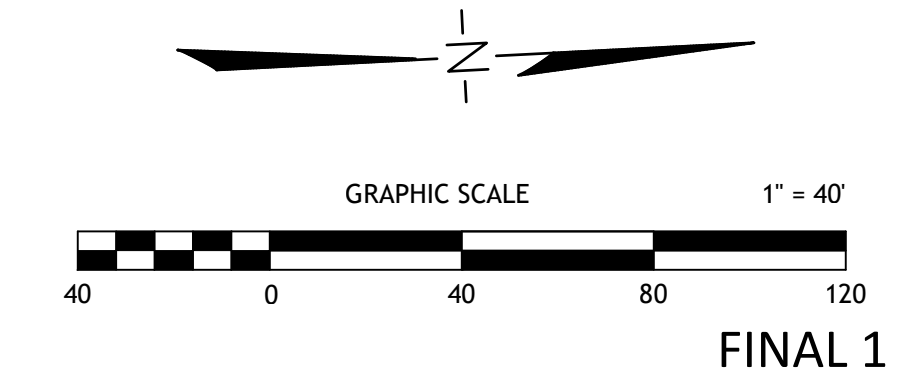


COCONINO COUNTY PUBLIC WORKS
STARDUST TRAIL ROAD WIDENING
AND RECONSTRUCTION
PLAN & PROFILE STA:
29+00 TO 38+25

JOB NO: 23CC01
DATE: APRIL 2024

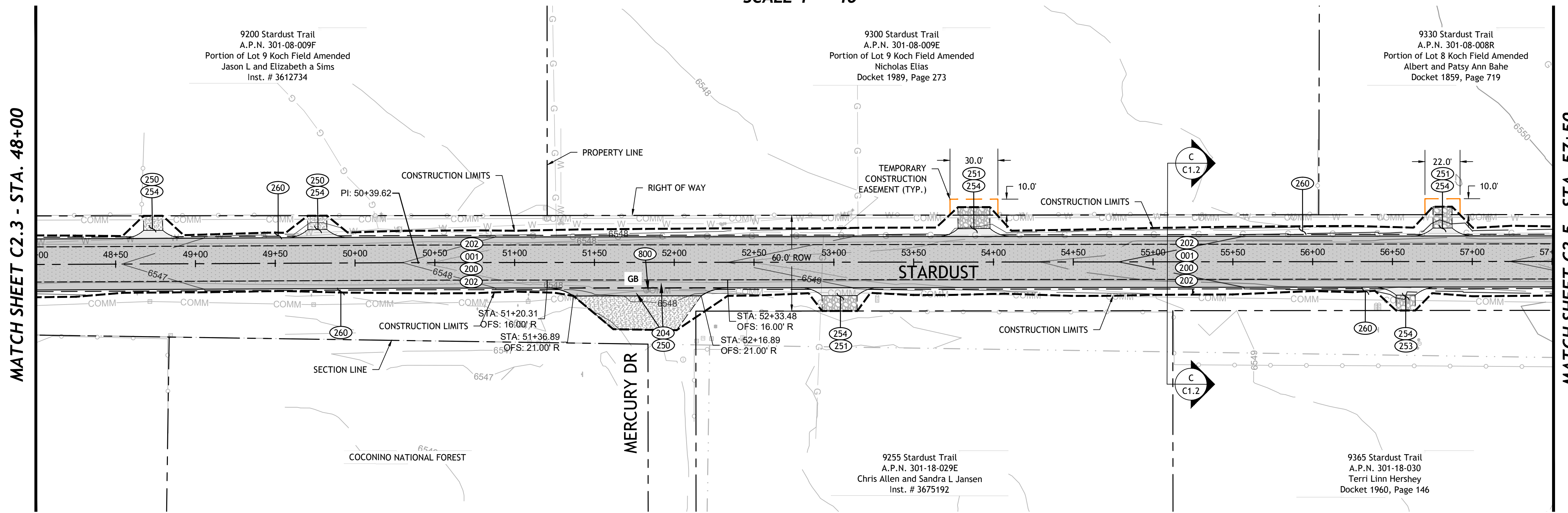
BY: CBW/DCW
CHECKED: CAL

C2.2



FINAL 1

PLAN VIEW
SCALE 1" = 40'



CONSTRUCTION NOTES

REMOVALS (000)

001 2,600 SY
Sawcut and remove asphalt.

NEW CONSTRUCTION (200)

200 2,323 SY
4" AC / 2" New ABC / 3" Ex. ABC per Detail 1, Sheet C1.2 and typical sections Sheet C1.2. Cross street match up per Detail A, Sheet C1.3. Includes subgrade preparation, Safety edge and shoulder build up at free edges.

202 993 SY
4" AC / 5" RAP millings per Detail 5, Sheet C1.2. Cross street match up per Detail A, Sheet C1.3. Includes subgrade preparation, Type B pavement edge and shoulder build up at free edges.

204 113 SY
4" AC / 5" ABC per Detail 7, Sheet C1.2. Includes subgrade preparation, pavement edge treatment and shoulder build up at free edges. At side streets, pavement section shall extend to edge of lane.

250 165 SY
Dirt/dirty cinder roadway/driveway match-up per Special Provisions.

251 71 SY
Cinder driveway match-up per Special Provisions.

253 13 SY
Gravel roadway/driveway match-up. Match existing thickness, gradation and color.

254 78 SY
3" AC / 4" ABC OR 4" Millings driveway match-up per Detail 3, Sheet C1.2 and Detail B, Sheet C1.3.

260 0.4 ACRES
Hydroseed disturbed areas and match-up slope with Coconino County native seed mix per Special Provisions.

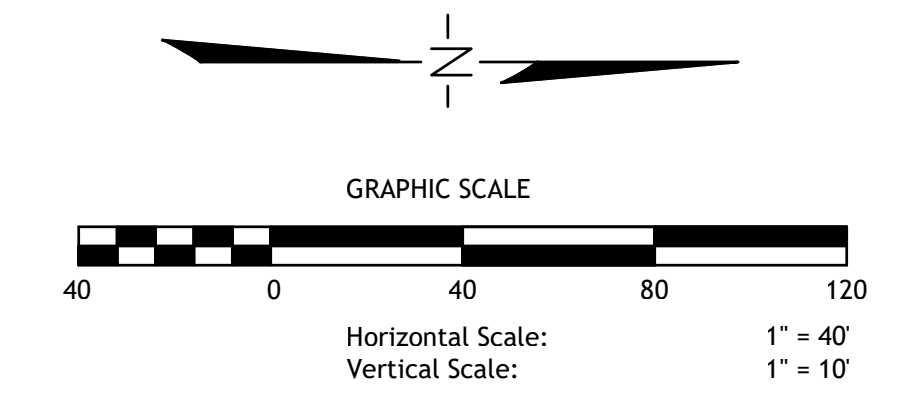
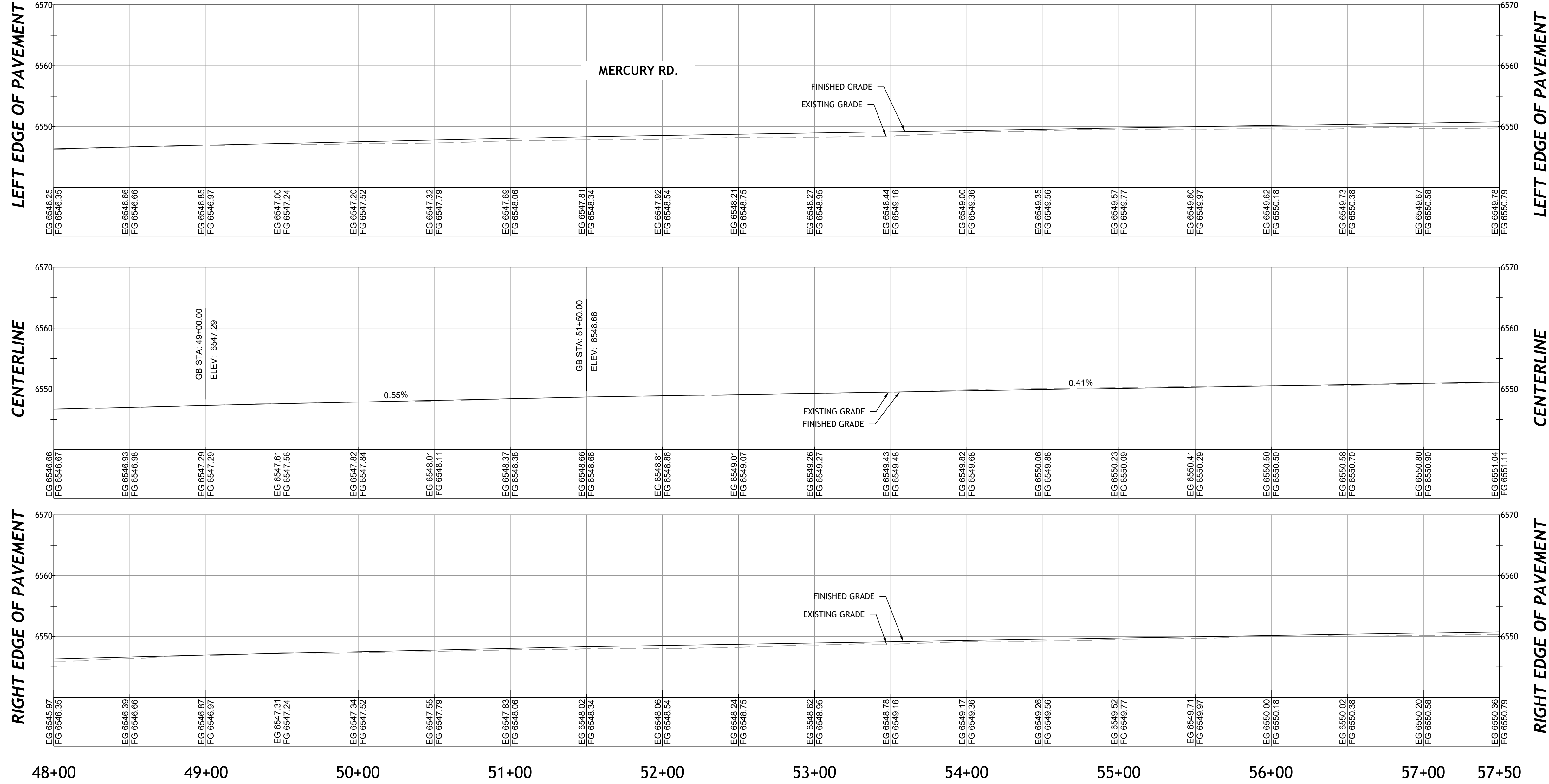
COORDINATION (800)

800 NPI
Coordinate relocation of, and new location of utility pull box with Lumen (Rodney McKee, 801.494.3607). Relocation of utility box is the responsibility of the utility.

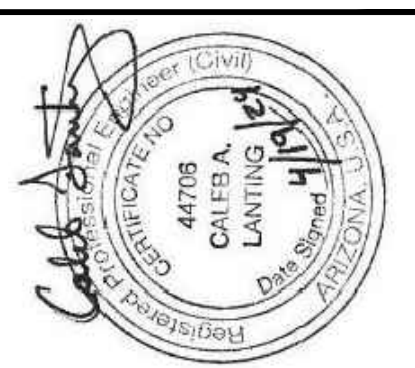


DATE	DESCRIPTION	REVISION

PROFILE VIEW
HORIZ. SCALE 1" = 40'
VERT. SCALE 1" = 10'



201 E BIRCH AVE, SUITE 3
Flagstaff, AZ 86001
(928) 774-4046

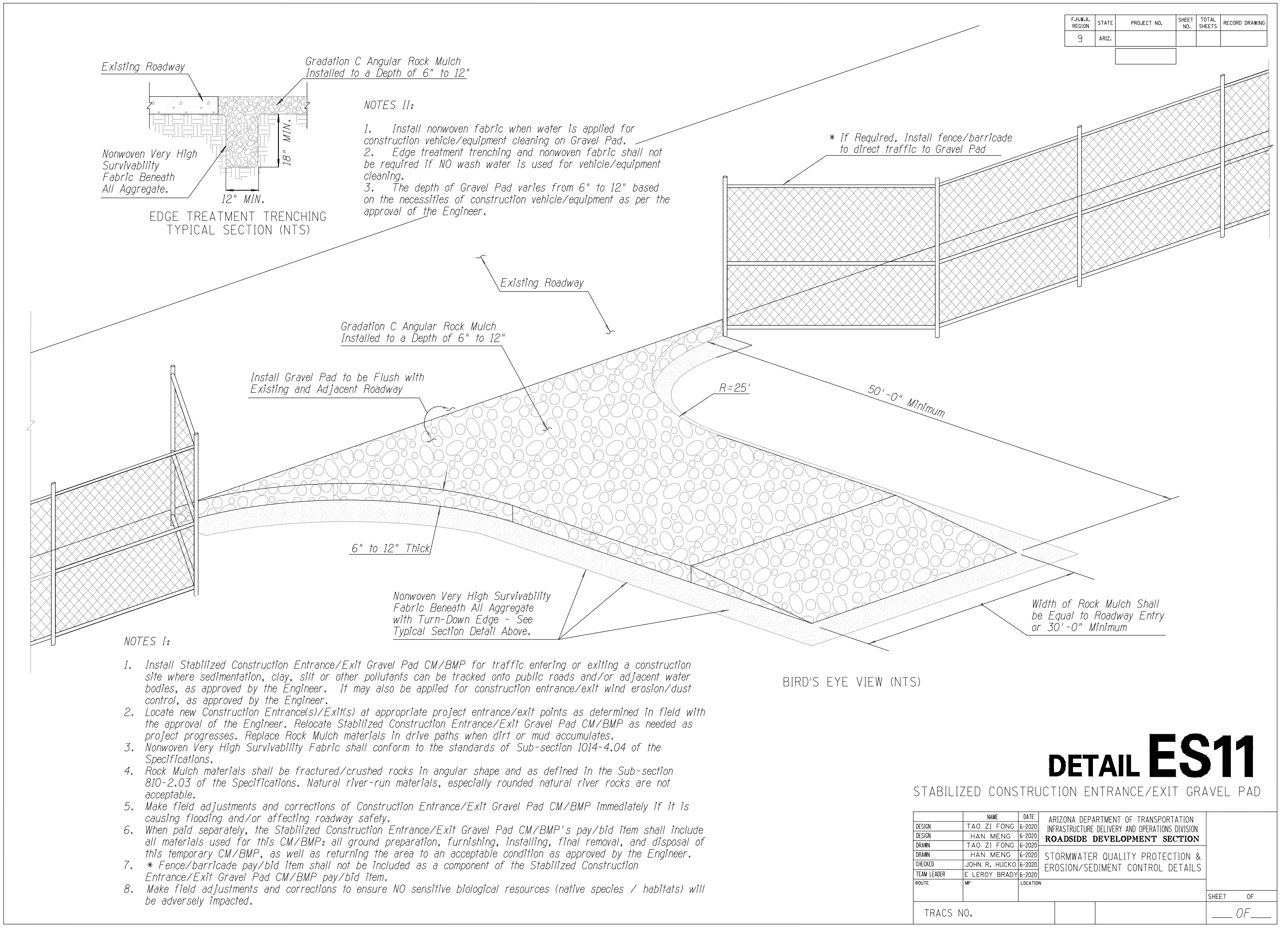
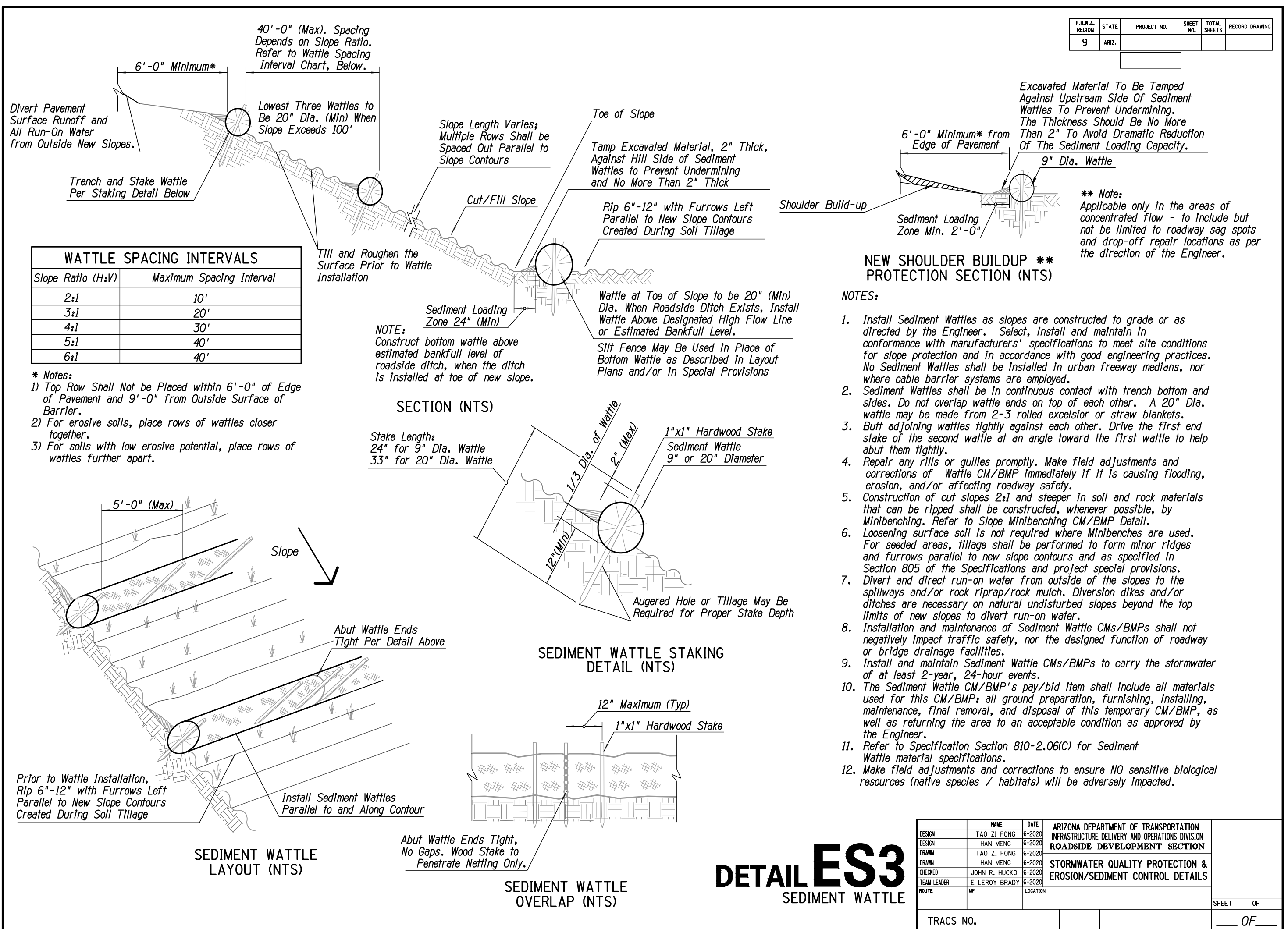


COCONINO COUNTY PUBLIC WORKS
STARDUST TRAIL ROAD WIDENING AND RECONSTRUCTION
PLAN & PROFILE STA. 48+00 TO 57+50

JOB NO: 23CC01
DATE: APRIL 2024

BY: CRW/DCW
CHECKED: CAL

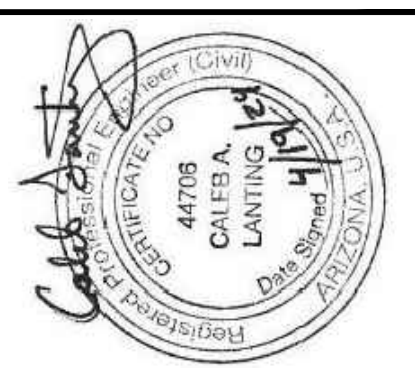
C2.4



- NEW SHOULDER BUILDUP ** PROTECTION SECTION (NTS)**
- NOTES:
1. Install Sediment Wattles as slopes are constructed to grade or as directed by the Engineer. Select, install and maintain in conformance with manufacturers' specifications to meet site conditions for slope protection and in accordance with good engineering practices. No Sediment Wattles shall be installed in urban freeway medians, nor where cable barrier systems are employed.
 2. Sediment Wattles shall be in continuous contact with trench bottom and sides. Do not overlap wattle ends on top of each other. A 20" Dia. wattle may be made from 2-3 rolled excelsior or straw blankets.
 3. Butt adjoining wattles tightly against each other. Drive the first and stake of the second wattle at an angle toward the first wattle to help butt them tightly.
 4. Repair any rills or gullies promptly. Make field adjustments and corrections of Wattle CM/BMP immediately if it is causing flooding, erosion, and/or affecting roadway safety.
 5. Construction of cut slopes 2:1 and steeper in soil and rock materials that can be ripped shall be constructed, whenever possible, by Minbenching. Refer to Slope Minbenching CM/BMP Detail.
 6. Loosening surface soil is not required where Minbenches are used. For seeded areas, tillage shall be performed to form minor ridges and furrows parallel to new slope contours and as specified in Section 805 of the Specifications and project special provisions. Divert and direct run-on water from outside of the slopes to the spillways and/or rock riprap/rock mulch. Diversion ditches and/or ditches are necessary on natural undisturbed slopes beyond the top limits of new slopes to divert run-on water.
 7. Installation and maintenance of Sediment Wattle CMs/BMPs shall not negatively impact traffic safety, nor the designed function of roadway or bridge drainage facilities.
 8. Install and maintain Sediment Wattle CMs/BMPs to carry the stormwater of at least 2-year, 24-hour events.
 9. The Sediment Wattle CM/BMP's pay/bid item shall include all materials used for this CM/BMP: all ground preparation, furnishing, installing, maintenance, final removal, and disposal of this temporary CM/BMP, as well as returning the area to an acceptable condition as approved by the Engineer.
 10. Refer to Specification Section 810-2.06(C) for Sediment Wattle material specifications.
 11. Make field adjustments and corrections to ensure NO sensitive biological resources (native species / habitats) will be adversely impacted.

NAME	DATE	ARIZONA DEPARTMENT OF TRANSPORTATION
DESIGN	TAD ZI FONG 06-2020	INFRASTRUCTURE DELIVERY AND OPERATIONS DIVISION
DESIGN	LIAM MENG 06-2020	ROADSIDE DEVELOPMENT SECTION
DESIGN	TAD ZI FONG 06-2020	ROADSIDE DEVELOPMENT SECTION
DESIGN	LIAM MENG 06-2020	ROADSIDE DEVELOPMENT SECTION
DESIGN	LIAM MENG 06-2020	ROADSIDE DEVELOPMENT SECTION
DESIGN	JOHN R. HUCKO 06-2020	STORMWATER QUALITY PROTECTION & EROSION/SEDIMENT CONTROL DETAILS
DESIGN	E. LEROY BRADY 06-2020	STORMWATER QUALITY PROTECTION & EROSION/SEDIMENT CONTROL DETAILS
DATE	06-2020	
LOCATION		
TRACS NO.		
SHEET	OF	
	OF	

201 E BIRCH AVE. SUITE 3
Flagstaff, AZ 86001
(928) 774-4046

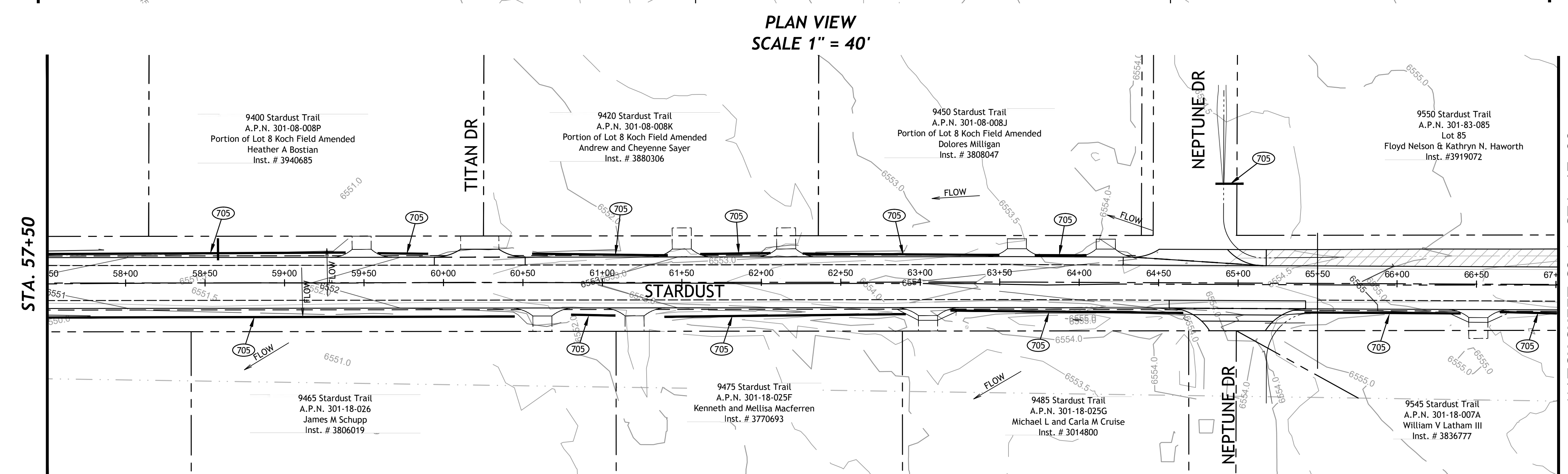
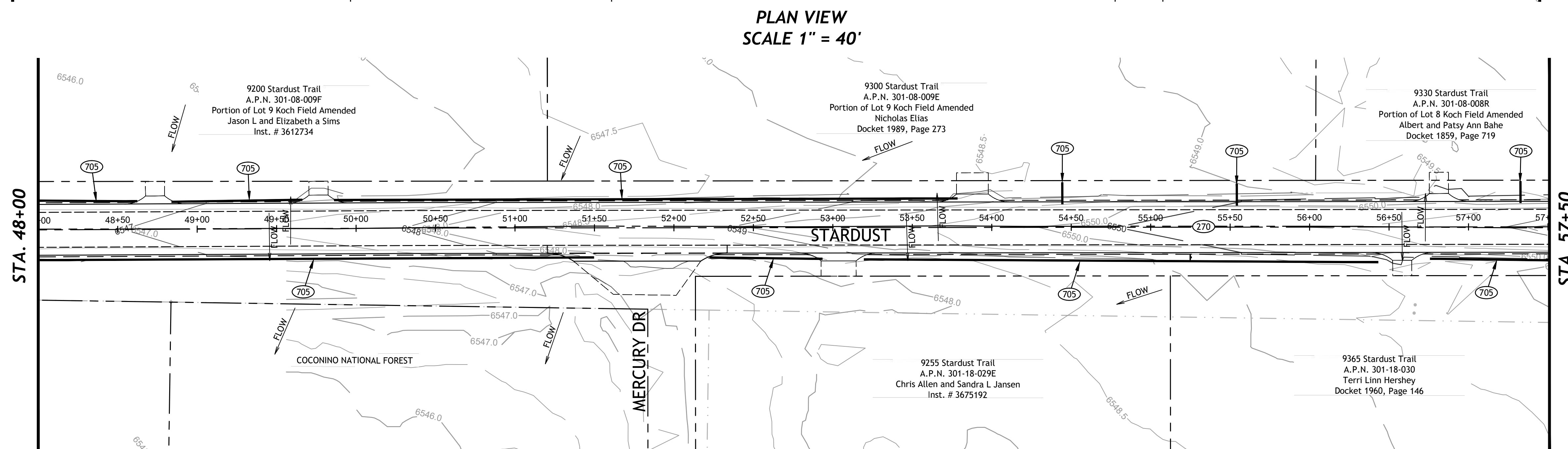
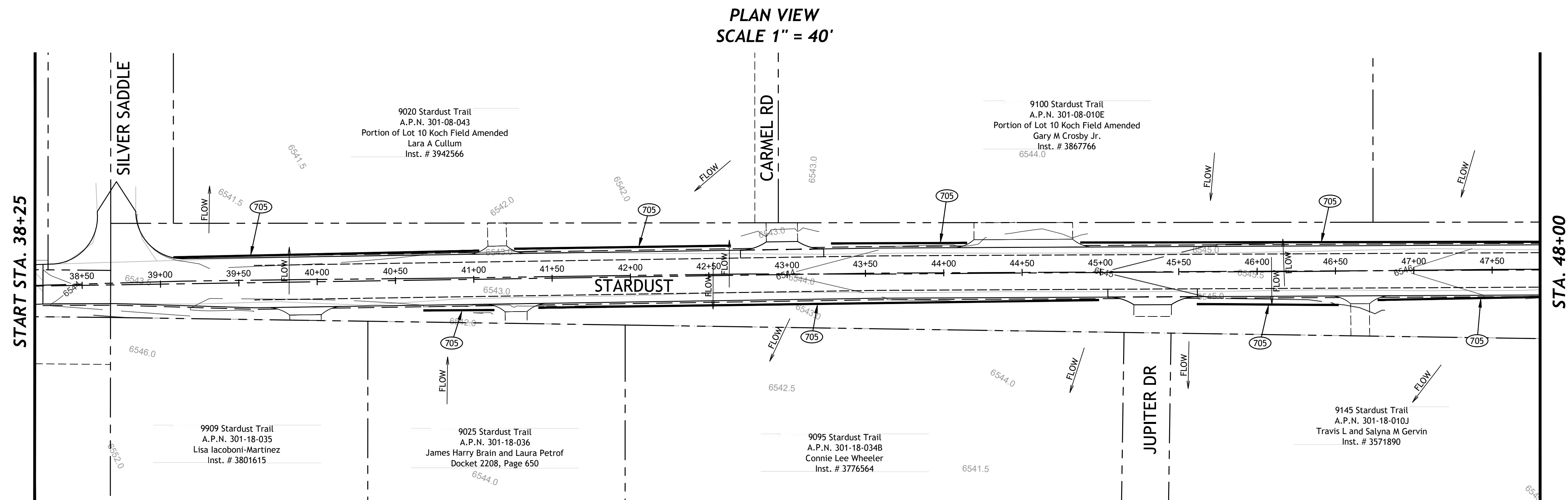


COCONINO COUNTY PUBLIC WORKS
STARDUST TRAIL ROAD WIDENING AND RECONSTRUCTION
EROSION CONTROL DETAILS

JOB NO: 23CC01
DATE: APRIL 2024

BY: CBW/DCW
CHECKED: CAL

EC4.1



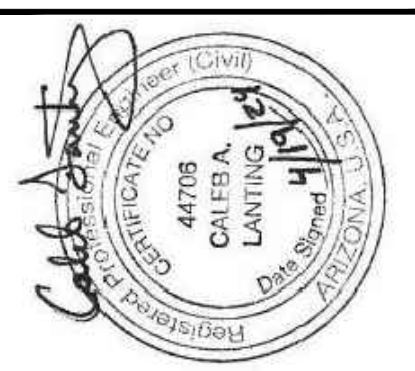
EROSION CONTROL (700)

- 700 1 LS
Construct stabilized construction entrance/exit gravel pad per detail ES11. Sheet EC4.1. Placement of construction entrance(s) to site and construction yard shall be determined in the field and relocated as needed to accommodate construction traffic. Coordinate construction entrance with COF Project Manager.
- 701 1 LS
Sweep tracked sediment from all streets as often as needed to control sediment track out. Street sweeping shall occur at least daily during construction, more if required to control sediment track out or as required by the City's Project Manager.
- 702 1 LS
Concrete washout shall be contained and properly disposed of upon completion of construction. Contractor to coordinate with COF Project Manager for location of designated concrete washout.
- 705 4,000 LF
Place 9" straw wattles per Detail ES3, Sheet EC4.1.



DATE	DESCRIPTION	REVISION

201 E BIRCH AVE. SUITE 3
Flagstaff, AZ 86001
(928) 774-4046



**COCONINO COUNTY PUBLIC WORKS
STARDUST TRAIL ROAD WIDENING
AND RECONSTRUCTION
EROSION CONTROL PLAN**

BY: CBW/DCW
CHECKED: CAL

JOB NO: 23CC01
DATE: APRIL 2024

EC4.2

