



City of Phoenix
OFFICE OF THE CITY ENGINEER
DESIGN AND CONSTRUCTION PROCUREMENT
200 W. Washington Street, 5th Floor
Phoenix, Arizona 85003-1611

**PHOENIX GOODYEAR AIRPORT
NEW APRON AND TAXIWAY CONNECTOR
DESIGN-BID-BUILD
AV41000077 FAA/ADOT**

RFx NUMBER 6000001378

ADDENDUM NO. 2

ISSUE DATE: March 29, 2023

Bidders are hereby notified that the Bidding and Contract Documents for the above project, for which Bids are to be received on Tuesday, April 4, 2023, are amended as follows:

SECTION I – Informative, Subsection (5) Bid Submittal (Pages I.F.B.-2) delete last paragraph in its entirety and replace with the following:

- Sealed bids will be submitted to the Design and Construction Procurement Bid Box located at City Hall Building, 200 W. Washington Street, First Floor Lobby, Phoenix, AZ 85003, prior to the time and date specified for bid opening.

QUESTIONS AND ANSWERS:

QUESTION 1: CD-102, CD-103, CD-104 have Construction Note 10 – Monitoring Well System Equipment, Install Vault Riser per Detail. There are no corresponding bid items for this work.

ANSWER: There should be a bid item for Bid Alts 2, 3, 4 for installation of the vault riser per detail A1/CP501. Below is the following breakdown of the intended/proposed adjust to grade existing monitoring well system structures:

- BID ALT 2
 - TSP-3 – Adjust Monitoring Well System – 3 structures
- BID ALT 3
 - TSP-3 – Adjust Monitoring Well System – 2 structures
- BID ALT 4
 - TSP-3 – Adjust Monitoring Well System – 4 structures

QUESTION 2: CU104 and CU105 have Construction Note 2 – Existing Utility Structure to Be Adjusted to Proposed Grade. There are no corresponding bid items in each Bid Alternate (3 & 4) for this work.

ANSWER: There should be a bid item for Bid Alt 4, only, for installation of the cover grade modifications per detail A3/CU502. Below is the following breakdown of the intended/proposed adjust to grade existing utility structures:

- BID ALT 3
 - TSP-3 – Adjust Utility Box and Cover to Grade – 0 structures

- BID ALT 4
 - TSP-3 – Adjust Utility Box and Cover to Grade – 4 structures

QUESTION 3: CU105 has Construction Note 1 – Aircraft Rated Catch Basin Per Detail A1. There is no corresponding bid item in Bid Alternate 4.

ANSWER: Correct. Proposed Catch Basin was previously missed in the project bid item list for Bid Alt 4, as there should be (1) new catch basin for Bid Alt 4.

QUESTION 4: Is there any information to indicate the depth of the existing Concrete Pavement that is to be removed at full depth?

ANSWER: Provided Geotechnical report includes the existing depth of concrete pavement. To be sent to Contractor if not already provided.

Plan Sheets:

1. Delete the following Plan Sheet pages in their entirety and replace with the attached revised Plan Sheets.
 - a) CD-102 - Demolition Plan Bid Alt 2
 - b) CD-103 - Demolition Plan Bid Alt 3
 - c) CD-104 - Demolition Plan Bid Alt 4
 - d) CU-104 - Grading and Drainage Plan Bid Alt 3
 - e) CU-105 - Grading and Drainage Plan Bid Alt 4

Bidders must acknowledge receipt of this Addendum by listing the number and date, where provided, on the PROPOSAL P.-1

Attachments:

- Additional Plan Sheets (5 Pages)
- Revised Bid Proposal Sheets (5 Pages)

All other terms and conditions remain unchanged.

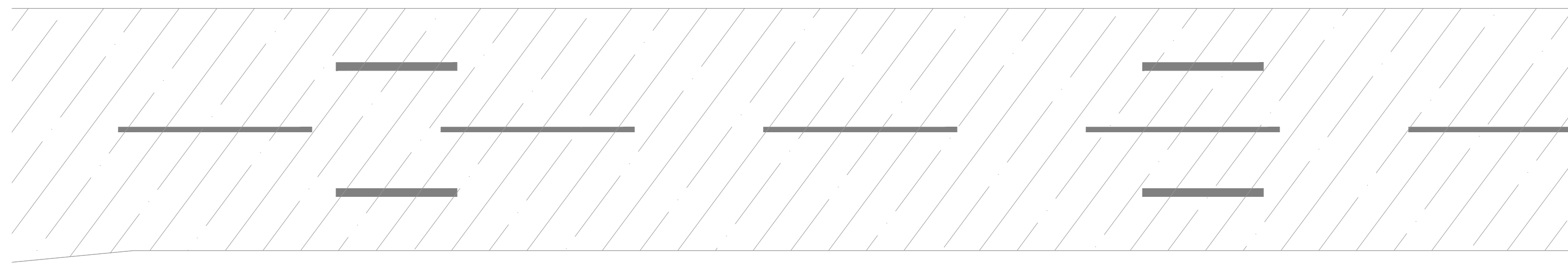


Samantha B. Ansmann
 Contracts Specialist II
 City of Phoenix
 Design and Construction Procurement

*****END OF ADDENDUM NO. 2*****



PLAN SHEET REVISIONS

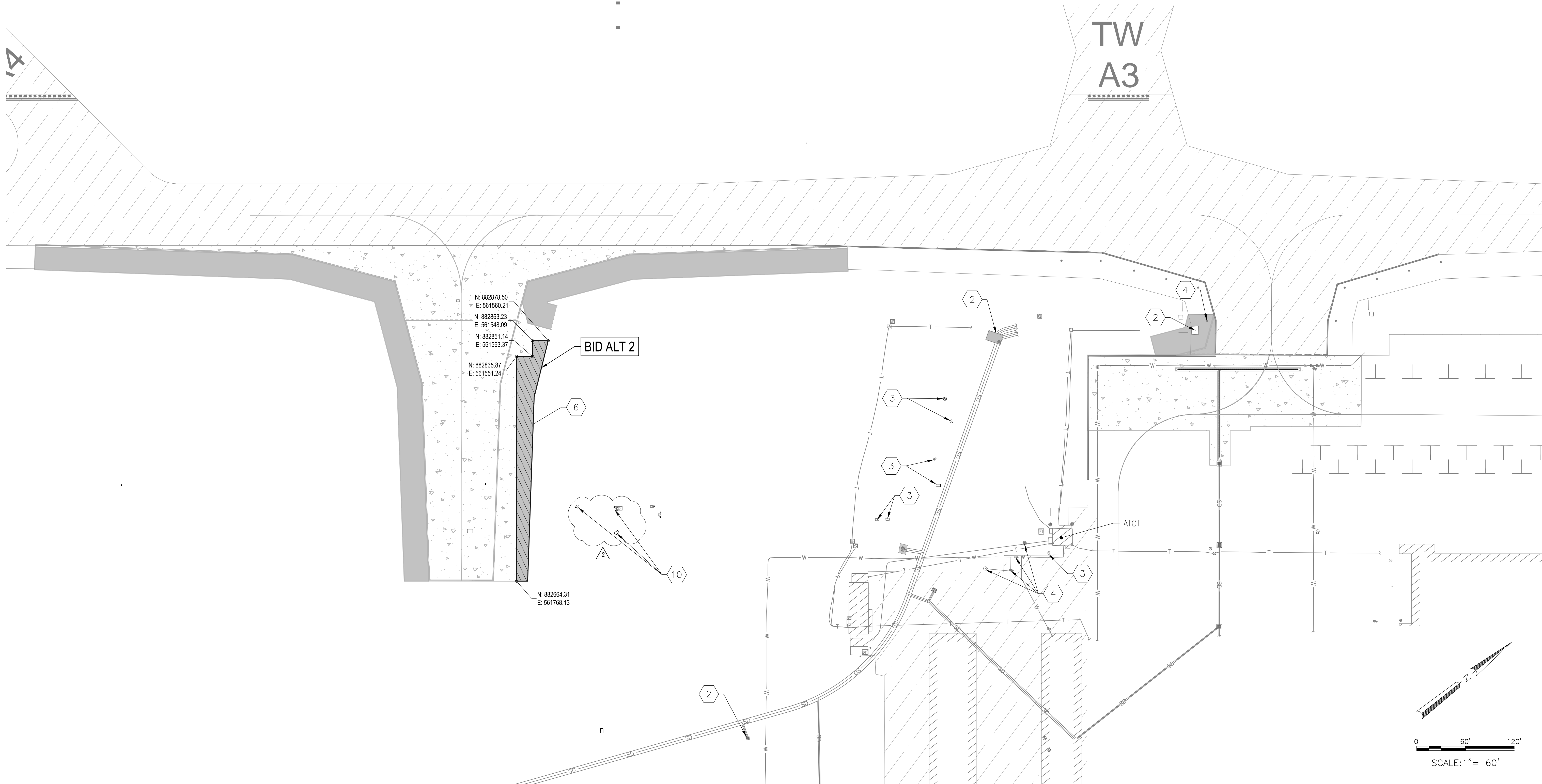


- EXISTING ASPHALTIC CONCRETE PAVEMENT
- EXISTING CONCRETE PAVEMENT
- MILL AND REMOVE ASPHALTIC CONCRETE PAVEMENT

- PROTECT EXISTING STRUCTURE IN PLACE.
- MONITORING WELL SYSTEM EQUIPMENT, PROTECT IN PLACE. (LOCATION APPROXIMATE, CONTRACTOR TO FIELD VERIFY).
- PROTECT EXISTING UTILITIES IN PLACE.
- COLD MILLING, FULL DEPTH APPROXIMATELY 4", (BID ALT 2). ITEM P-101.
- MONITORING WELL SYSTEM EQUIPMENT, INSTALL VAULT RISER DETAIL PER DETAIL A2, SHEET CP501. (LOCATION APPROXIMATE, CONTRACTOR TO FIELD VERIFY).

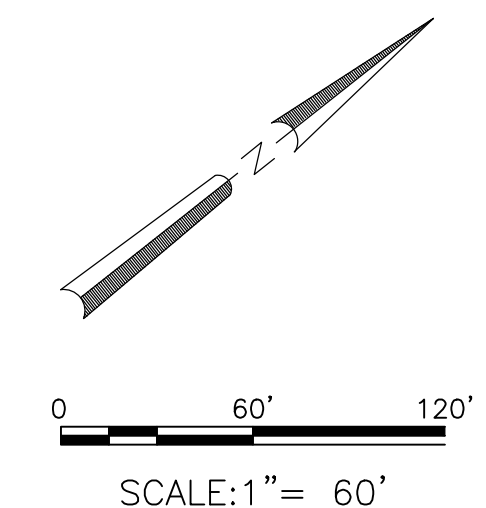
D3 LEGEND
NOT TO SCALE

D4 CONSTRUCTION NOTES
NOT TO SCALE



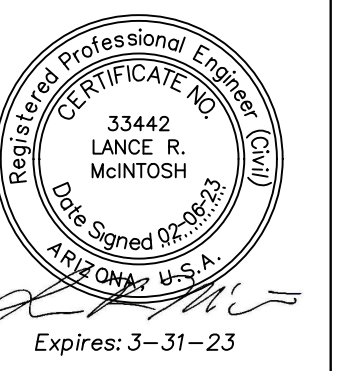
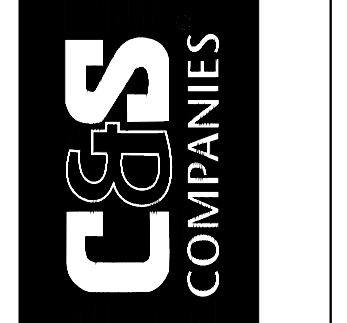
N: 882878.50
E: 561560.21
N: 882863.23
E: 561548.09
N: 882851.14
E: 561563.37
N: 882835.87
E: 561551.24

N: 882664.31
E: 561768.13



PER CITY OF PHOENIX CODE CHAPTER 2, SECTION 2-28. THESE PLANS ARE FOR OFFICIAL USE ONLY AND MAY NOT BE SHARED WITH OTHERS EXCEPT AS REQUIRED TO FULFILL THE OBLIGATIONS OF CONTRACTOR'S CONTRACT WITH THE CITY OF PHOENIX.

A1 DEMOLITION PLAN
SCALE: 1" = 60'



PER CITY OF PHOENIX CITY CODE CHAPTER 2, SECTION 2-28, THESE PLANS ARE FOR OFFICIAL USE ONLY AND MAY NOT BE SHARED WITH OTHERS EXCEPT AS REQUIRED TO FULFILL THE OBLIGATIONS OF YOUR CONTRACT WITH THE CITY OF PHOENIX.

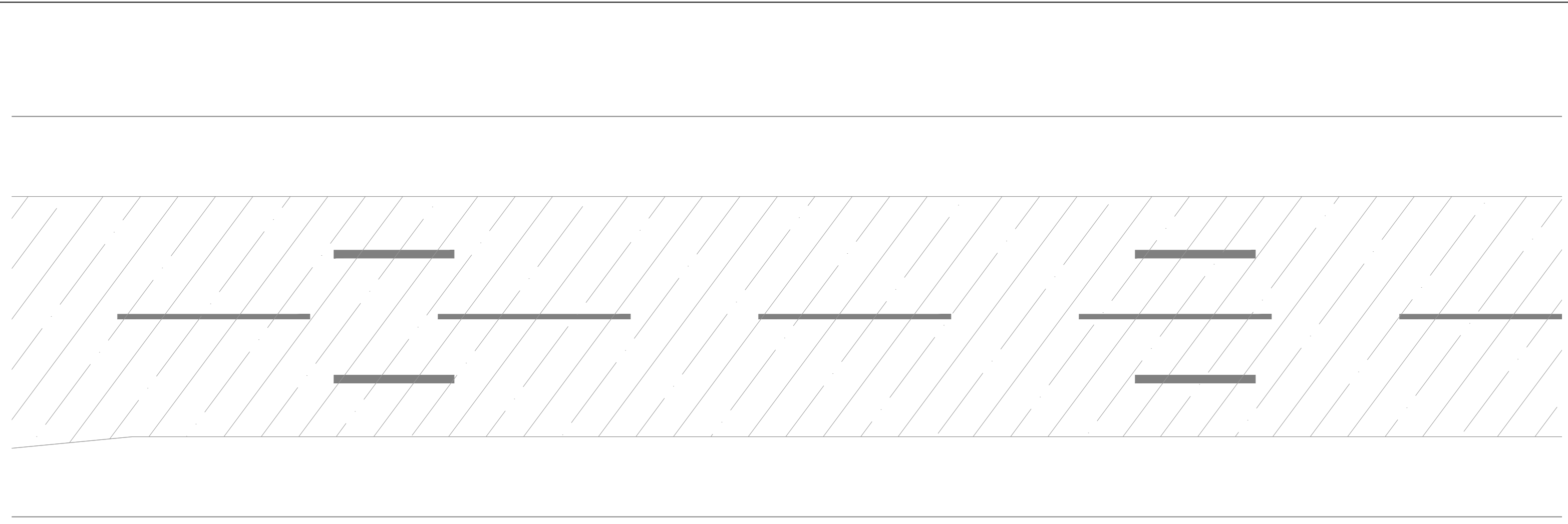
ADDERIUM NO. 2	3/29/2023		
NO.	REVISIONS / SUBMISSIONS		DATE

PHX DVT CYR
CITY OF PHOENIX AVIATION DEPARTMENT
PHOENIX GOODYEAR AIRPORT
NEW APRON AND TAXIWAY CONNECTOR
AV41000077 FAA/ADOT

Designed by: LM	Drawn by: RB
Checked by: LM	Date: February 2023
Dwg. scale:	

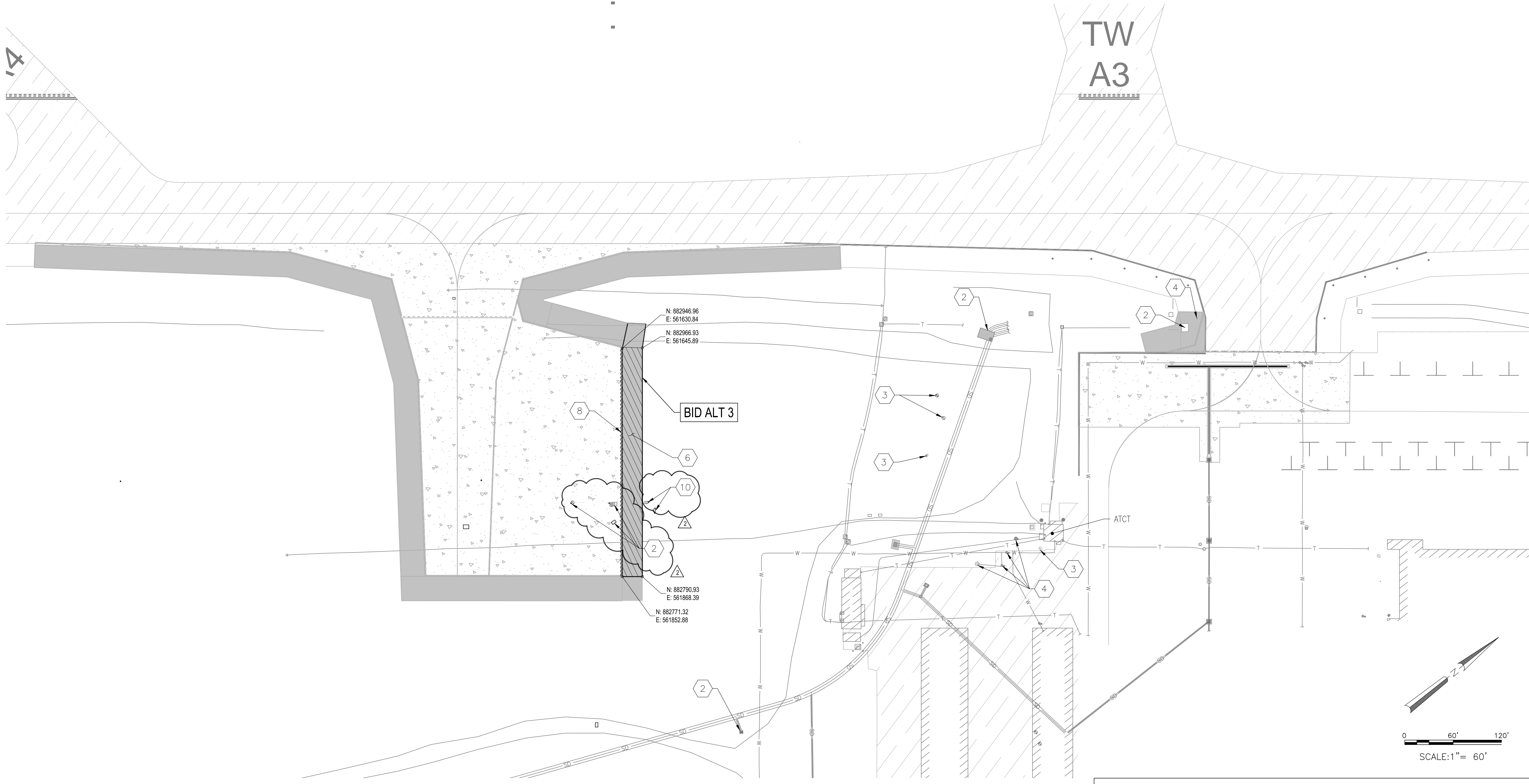
Sheet Overview Title
DEMOLITION PLAN
BID ALT 2

Sheet Reference Number:
CD-102
Sheet 13 of 61



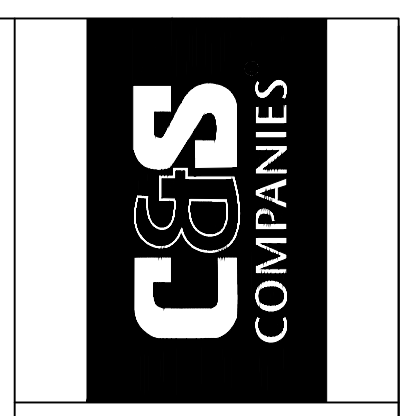
D3	LEGEND NOT TO SCALE
	EXISTING ASPHALTIC CONCRETE PAVEMENT
	EXISTING CONCRETE PAVEMENT
	MILL AND REMOVE ASPHALTIC CONCRETE PAVEMENT
	EXISTING PAVEMENT MARKING REMOVAL

D4	CONSTRUCTION NOTES NOT TO SCALE
2	PROTECT EXISTING STRUCTURE IN PLACE.
3	MONITORING WELL SYSTEM EQUIPMENT, PROTECT IN PLACE (LOCATION APPROXIMATE, CONTRACTOR TO FIELD VERIFY).
4	PROTECT EXISTING UTILITIES IN PLACE.
6	COLD MILLING, FULL DEPTH APPROXIMATELY 4", (BID ALT 3), ITEM P-101.
8	EXISTING PAVEMENT MARKING REMOVAL, (BID ALT 3), ITEM P-620.
10	MONITORING WELL SYSTEM EQUIPMENT, INSTALL VAULT RISER PER DETAIL A2, SHEET CP501. (LOCATION APPROXIMATE, CONTRACTOR TO FIELD VERIFY).



A1 DEMOLITION PLAN
SCALE: 1" = 60'

PER CITY OF PHOENIX CODE CHAPTER 2, SECTION 2-28. THESE PLANS ARE FOR OFFICIAL USE ONLY AND MAY NOT BE SHARED WITH OTHERS EXCEPT AS REQUIRED TO FULFILL THE OBLIGATIONS OF CONTRACTOR'S CONTRACT WITH THE CITY OF PHOENIX.



PER CITY OF PHOENIX CITY CODE CHAPTER 2, SECTION 2-28. THESE PLANS ARE FOR OFFICIAL USE ONLY AND MAY NOT BE SHARED WITH OTHERS EXCEPT AS REQUIRED TO FULFILL THE OBLIGATIONS OF YOUR CONTRACT WITH THE CITY OF PHOENIX.

ADDERIUM NO. 2	9/29/2023		
NO.	REVISIONS / SUBMISSIONS	DATE	

PHX DVT CYR
CITY OF PHOENIX AVIATION DEPARTMENT
PHOENIX GOODYEAR AIRPORT
NEW APRON AND TAXIWAY CONNECTOR
AV41000077 FAA/ADOT

Designed by: LM	Drawn by: RB
Checked by: LM	Date: February 2023
Dwg. scale:	

Sheet Overview Title

DEMOLITION PLAN
BID ALT 3

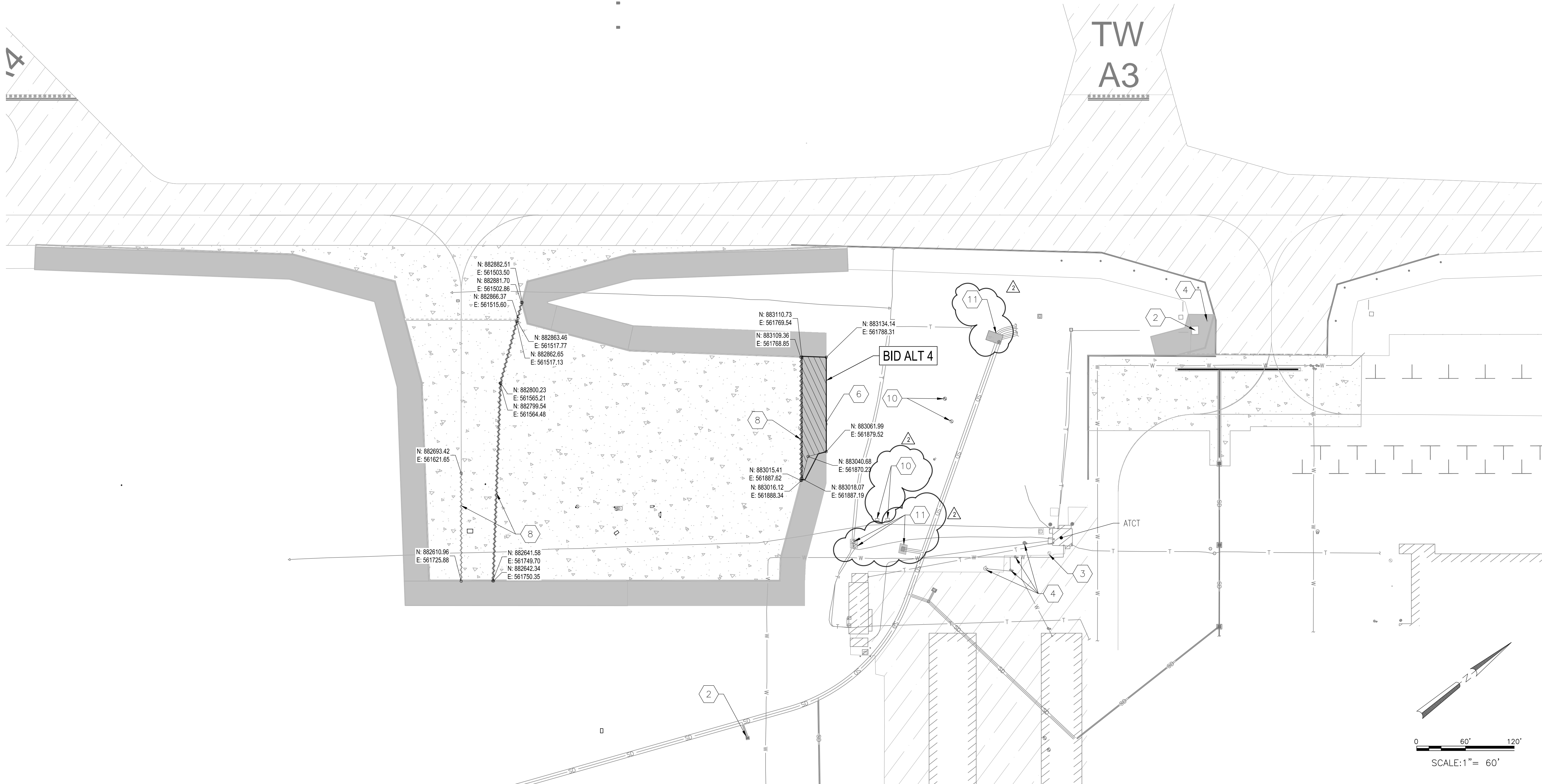
Sheet Reference Number:

CD-103

Sheet 14 of 61

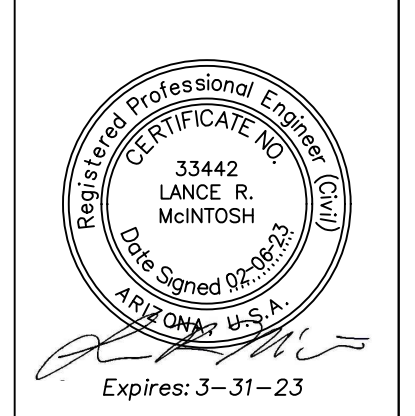
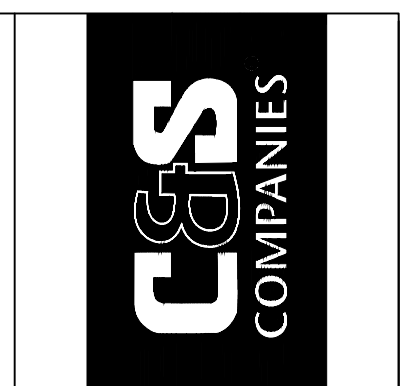


D3 LEGEND NOT TO SCALE	EXISTING ASPHALTIC CONCRETE PAVEMENT	PROTECT EXISTING STRUCTURE IN PLACE.
	EXISTING CONCRETE PAVEMENT	MONITORING WELL SYSTEM EQUIPMENT, PROTECT IN PLACE (LOCATION APPROXIMATE, CONTRACTOR TO FIELD VERIFY).
	MILL AND REMOVE ASPHALTIC CONCRETE PAVEMENT	PROTECT EXISTING UTILITIES IN PLACE.
	EXISTING PAVEMENT MARKING REMOVAL	COLD MILLING, FULL DEPTH APPROXIMATELY 4", (BID ALT 4). ITEM P-101.
D4 CONSTRUCTION NOTES NOT TO SCALE	EXISTING PAVEMENT MARKING REMOVAL, (BID ALT 4). ITEM P-620.	MONITORING WELL SYSTEM EQUIPMENT, INSTALL VAULT RISER PER DETAIL A2, SHEET CP501. (LOCATION APPROXIMATE, CONTRACTOR TO FIELD VERIFY)
	ADJUST EXISTING UTILITY STRUCTURE TO PROPOSED GRADE PER DETAIL A3, SHEET CU502	



A1 DEMOLITION PLAN
SCALE: 1" = 60'

PER CITY OF PHOENIX CODE CHAPTER 2, SECTION 2-28. THESE PLANS ARE FOR OFFICIAL USE ONLY AND MAY NOT BE SHARED WITH OTHERS EXCEPT AS REQUIRED TO FULFILL THE OBLIGATIONS OF CONTRACTOR'S CONTRACT WITH THE CITY OF PHOENIX.



PER CITY OF PHOENIX CITY CODE CHAPTER 2, SECTION 2-28. THESE PLANS ARE FOR OFFICIAL USE ONLY AND MAY NOT BE SHARED WITH OTHERS EXCEPT AS REQUIRED TO FULFILL THE OBLIGATIONS OF YOUR CONTRACT WITH THE CITY OF PHOENIX.

ADDERIUM NO. 2	NO.	REVISIONS / SUBMISSIONS	DATE

PHX DVT CYR
CITY OF PHOENIX AVIATION DEPARTMENT
PHOENIX GOODYEAR AIRPORT
NEW APRON AND TAXIWAY CONNECTOR
AV41000077 FAA/ADOT

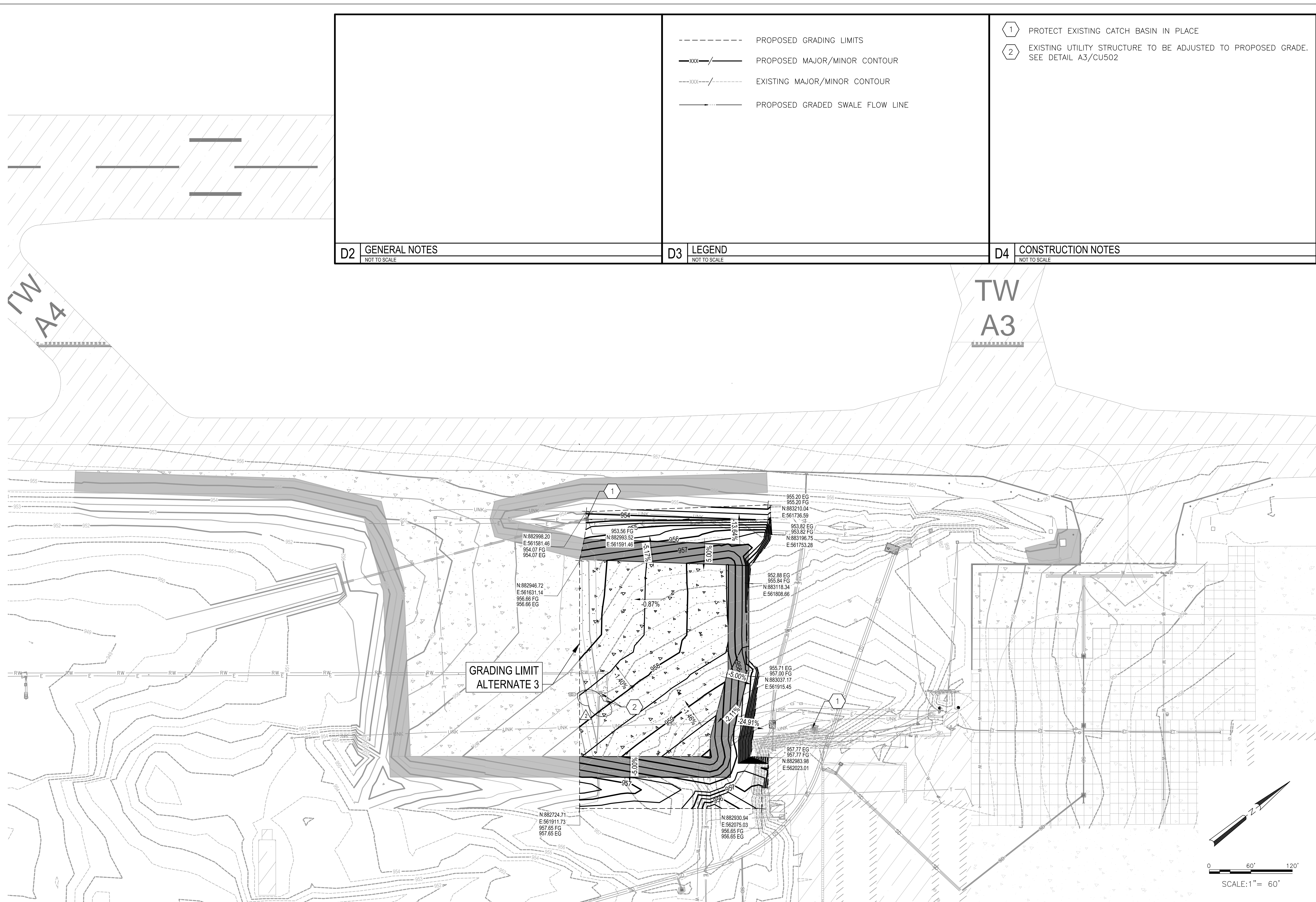
Designed by: LM	Drawn by: RB
Checked by: LM	Date: February 2023
Dwg. scale:	

Sheet Overview Title

DEMOLITION PLAN
BID ALT 4

Sheet Reference Number:
CD-104

Sheet 15 of 61



- PROPOSED GRADING LIMITS
- xxx--- / --- PROPOSED MAJOR/MINOR CONTOUR
- xxx--- / - - - EXISTING MAJOR/MINOR CONTOUR
- PROPOSED GRADED SWALE FLOW LINE

- 1 PROTECT EXISTING CATCH BASIN IN PLACE
- 2 EXISTING UTILITY STRUCTURE TO BE ADJUSTED TO PROPOSED GRADE. SEE DETAIL A3/CU502

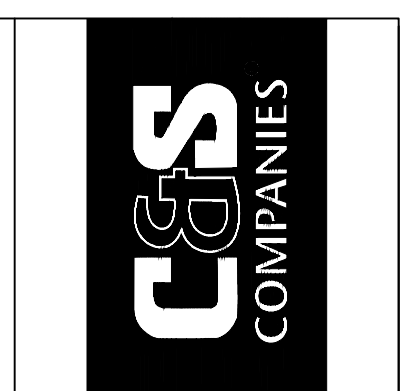
D2 GENERAL NOTES
NOT TO SCALE

D3 LEGEND
NOT TO SCALE

D4 CONSTRUCTION NOTES
NOT TO SCALE

A1 GRADING AND DRAINAGE PLAN
SCALE: 1" = 60'

PER CITY OF PHOENIX CODE CHAPTER 2, SECTION 2-28, THESE PLANS ARE FOR OFFICIAL USE ONLY AND MAY NOT BE SHARED WITH OTHERS EXCEPT AS REQUIRED TO FULFILL THE OBLIGATIONS OF CONTRACTOR'S CONTRACT WITH THE CITY OF PHOENIX.



PER CITY OF PHOENIX CITY CODE CHAPTER 2, SECTION 2-28, THESE PLANS ARE FOR OFFICIAL USE ONLY AND MAY NOT BE SHARED WITH OTHERS EXCEPT AS REQUIRED TO FULFILL THE OBLIGATIONS OF YOUR CONTRACT WITH THE CITY OF PHOENIX.

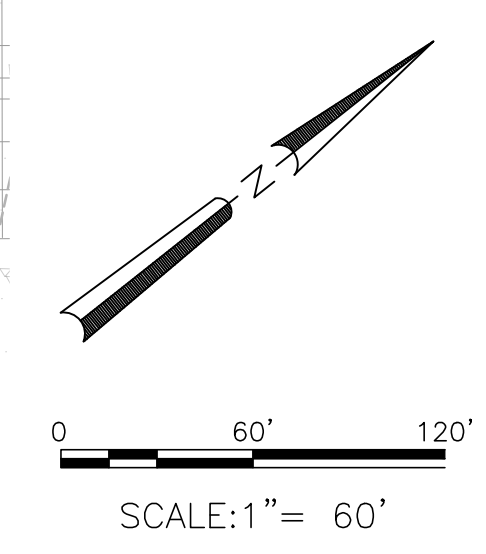
ADDERIUM NO. 2	9/29/2023		
NO.	REVISIONS /	SUBMISSIONS	DATE

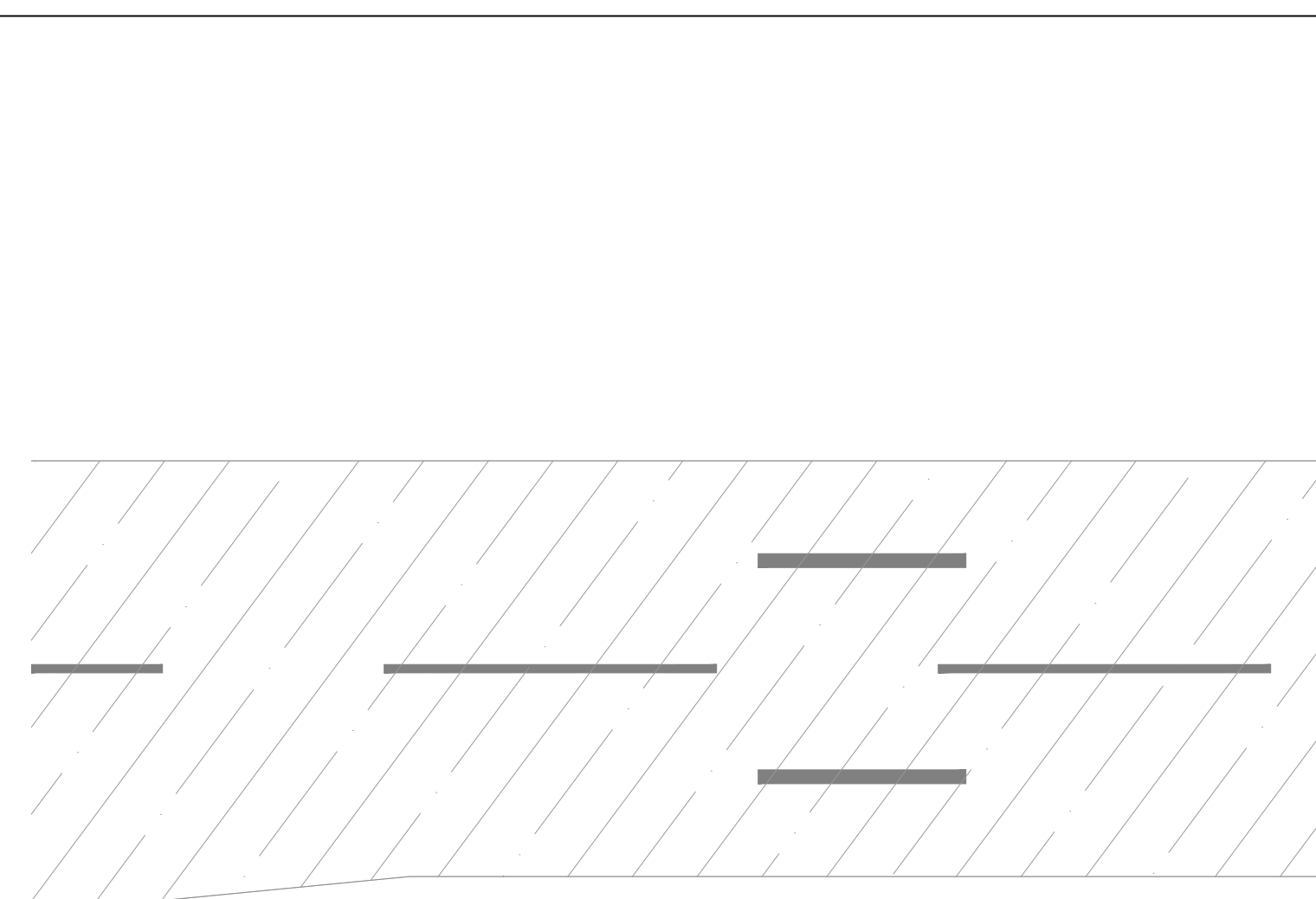
PHX DVT CYR
CITY OF PHOENIX AVIATION DEPARTMENT
PHOENIX GOODYEAR AIRPORT
NEW APRON AND TAXIWAY CONNECTOR
AV41000077 FAA/ADOT

Designed by: RB
Drawn by: RB
Checked by: LM
Date: February 2023
Dwg. scale: ---

Sheet Overview Title
GRADING AND DRAINAGE PLAN
BID ALT 3

Sheet Reference Number:
CU104
Sheet 34 of 61





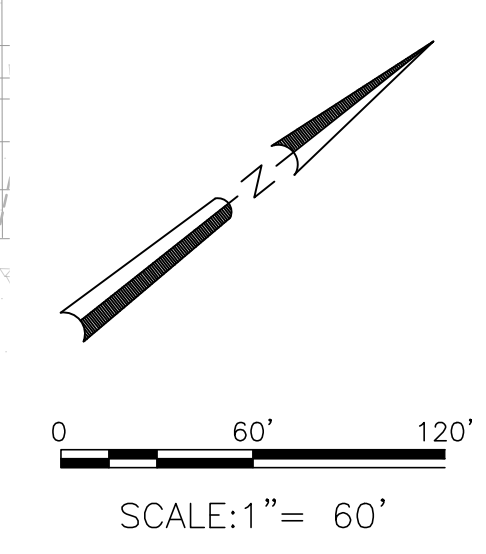
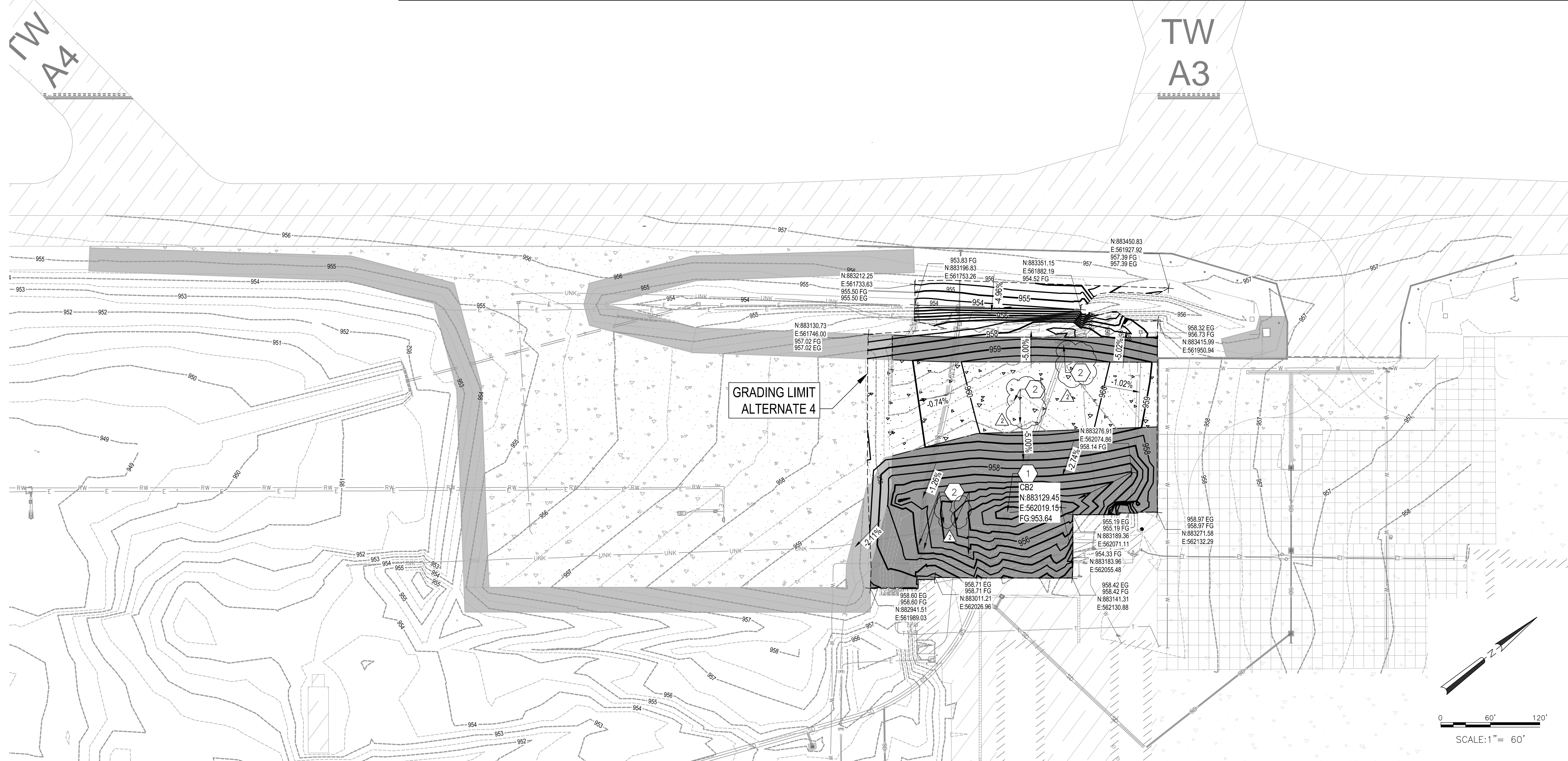
D2 GENERAL NOTES
NOT TO SCALE

- PROPOSED GRADING LIMITS
- xxx---/--- PROPOSED MAJOR/MINOR CONTOUR
- xxx---/--- EXISTING MAJOR/MINOR CONTOUR
- PROPOSED AIRCRAFT RATED CATCH BASIN
- PROPOSED GRADED SWALE FLOW LINE

D3 LEGEND
NOT TO SCALE

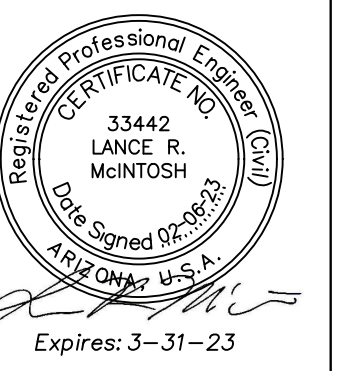
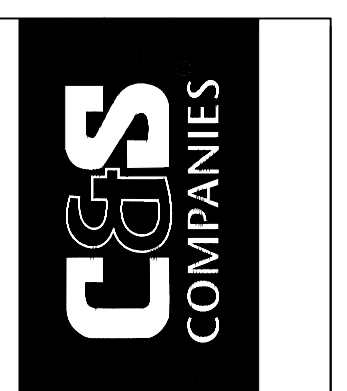
- ① AIRCRAFT RATED CATCH BASIN PER DETAIL A1, SHEET CU502. (BID ALT 4). ITEM D-751.
- ② EXISTING UTILITY STRUCTURE TO BE MODIFIED, ADJUST TO PROPOSED GRADE. SEE DETAIL A3/CU502

D4 CONSTRUCTION NOTES
NOT TO SCALE



A1 GRADING AND DRAINAGE PLAN
SCALE: 1" = 60'

PER CITY OF PHOENIX CODE CHAPTER 2, SECTION 2-28. THESE PLANS ARE FOR OFFICIAL USE ONLY AND MAY NOT BE SHARED WITH OTHERS EXCEPT AS REQUIRED TO FULFILL THE OBLIGATIONS OF CONTRACTOR'S CONTRACT WITH THE CITY OF PHOENIX.



PER CITY OF PHOENIX CITY CODE CHAPTER 2, SECTION 2-28. THESE PLANS ARE FOR OFFICIAL USE ONLY AND MAY NOT BE SHARED WITH OTHERS EXCEPT AS REQUIRED TO FULFILL THE OBLIGATIONS OF YOUR CONTRACT WITH THE CITY OF PHOENIX.	ADDERIUM NO. 2	9/29/2023	DATE
NO.	REVISIONS /	SUBMISSIONS	

PHX DVT CYR
CITY OF PHOENIX AVIATION DEPARTMENT
PHOENIX GOODYEAR AIRPORT
NEW APRON AND TAXIWAY CONNECTOR
AV41000077 FAA/ADOT

Designed by: RB	Drawn by: RB	Checked by: LM	Date: February 2023
Dwg. scale: ---			

Sheet Overview Title
GRADING AND DRAINAGE PLAN
BID ALT 4

Sheet Reference Number:
CU105
Sheet 36 of 61

BID PROPOSAL SHEET REVISIONS

PHOENIX GOODYEAR AIRPORT
NEW APRON AND TAXIWAY CONNECTORS
BID PROPOSAL FORM

LINE NO.	ITEM NO.	DESCRIPTION	EST. QTY.	UNIT	UNIT PRICE	EXTENDED TOTAL
1	C-100	CONTRACTOR QUALITY CONTROL PLAN (CQCP)	1	LS		
2	C-102	TEMPORARY POLLUTION, EROSION, AND SILTATION CONTROL	1	LS		
3	C-105	MOBILIZATION	1	LS		
4	C-106	SAFETY, SECURITY AND MAINTENANCE OF TRAFFIC	1	LS		
5	P-101-5.1	COLD MILLING	3,640	SY		
6	P-101-5.2	CONCRETE PAVEMENT REMOVAL	3,760	SY		
7	P-152-4.1	UNCLASSIFIED EXCAVATION	745	CY		
8	P-154-5.1	6" THICK SUBBASE COURSE	11,085	SY		
9	P-209-5.1	12" CRUSHED AGGREGATE BASE COURSE	1,745	CY		
10	P-209-5.2	16" CRUSHED AGGREGATE BASE COURSE	25	CY		
11	P-304-8.1	6" THICK CEMENT-TREATED BASE COURSE	11,085	SY		
12	P-401-8.1	4" THICK BITUMINOUS SURFACE COURSE	1,215	TON		
13	P-401-8.2	9" THICK BITUMINOUS SURFACE COURSE	30	TON		
14	P-501-8.1	17" PORTLAND CEMENT CONCRETE PAVEMENT	11,085	SY		
15	P-602-5.1	BITUMINOUS PRIME COAT	25	TON		
16	P-620-5.1	TAXIWAY PAINTSTRIPING (YELLOW, REFLECTORIZED)	2,470	SF		
17	P-620-5.1	EXISTING PAVEMENT MARKING REMOVAL	260	SF		
18	D-701-5.1	24" DIAMETER REINFORCED CONCRETE PIPE	380	LF		
19	D-750-5.1	12" AIRCRAFT RATED TRENCH DRAIN	290	LF		
20	D-751-5.1	AIRCRAFT RATED CATCH BASIN	1	EA		
21	TSP-1	SOIL STERILANT	16,310	SY		
22	TSP-2	MISCELLANEOUS REMOVALS AND OTHER WORK	1	LS		
23	TSP-3	ADJUST UTILITY BOX AND COVER TO GRADE	3	EA		
24	TSP-4	EXISTING UTILITY RELOCATION (ALLOWANCES)	1	FA		
25	TSP-5	RIP RAP (D50-6", DEPTH=24")	70	CY		
26	L-100-5.1	REMOVE AND SALVAGE FAA SWS EQUIPMENT FOR REINSTALLATION. DEMO CONCRETE FOUNDATION AND REMOVE CABLE BACK TO SWS SHELTER PANEL	1	LS		
27	L-100-5.2	TEMPORARY AIRFIELD LIGHTING CABLE JUMPERS	1	LS		
28	L-100-5.3	REMOVE AND SALVAGE EXISTING EDGE LIGHT AND ISOLATION TRANSFORMER. INSTALL NEW BLANK COVER AND GASKET ON EXISTING L-867 BASE CAN	1	EA		
29	L-100-5.4	REMOVE, TEMPORARILY MOUNT AND POWER AIRFIELD GUIDANCE SIGN AND ISOLATION TRANSFORMER, DEMO SIGN BASE	1	EA		
30	L-100-5.5	REINSTALL FAA SWS EQUIPMENT ON NEW FOUNDATION AND GROUNDING, INSTALLED, TESTED AND COMMISSIONED COMPLETE (INCLUDES ANTENNA RELOCATION AT SWS SHELTER)	1	LS		
31	L-100-5.6	REMOVE, RELOCATE, REPLACE CIRCUIT BREAKERS IN SWS SHELTER PANEL. ADD NEW 20 AMP, 240 VOLT , 2 POLE CIRCUIT BREAKER, INSTALLED COMPLETE	1	EA		
32	L-100-5.7	NEW 70' STEEL POLE WITH 3, 900 WATT LED FIXTURES AND LED L-810 OBSTRUCTION LIGHT ON NEW CONCRETE FOUNDATION WITH GROUNDING COMPLETE	1	EA		

PHOENIX GOODYEAR AIRPORT
NEW APRON AND TAXIWAY CONNECTORS
BID PROPOSAL FORM

LINE NO.	ITEM NO.	DESCRIPTION	EST. QTY.	UNIT	UNIT PRICE	EXTENDED TOTAL
33	L-100-5.7	NEW 20AMP, 480V, 2 POLE CIRCUIT BREAKER INSTALLED COMPLETE	1	LS		
34	L-108-5.1	L-824, TYPE C, 2/C #8 AWG, 5KV CABLE	2,895	LF		
35	L-108-5.2	3-4/0, 4/0 GND (SWS CIRCUIT)	4,162	LF		
36	L-108-5.3	2-#10 AWG, #10 NEUTRAL W/ #10 GROUND (APRON LIGHTING)	200	LF		
37	L-110-5.1	SINGLE-WAY, (1) - 2" CONDUIT, SLURRY ENCASED	680	LF		
38	L-110-5.2	MULTIPLE-WAY, (4) - 2" CONDUIT, SLURRY ENCASED	645	LF		
39	L-110-5.3	MULTIPLE-WAY, (4) - 2" CONDUIT, CONCRETE ENCASED	105	LF		
40	L-110-5.4	MULTIPLE-WAY, (5) - 2" CONDUIT, SLURRY ENCASED	3,950	LF		
41	L-110-5.5	MULTIPLE-WAY, (5) - 2" CONDUIT, CONCRETE ENCASED	325	LF		
42	L-110-5.6	SINGLE WAY, (1) -1" CONDUIT, SLURRY ENCASED	50	LF		
43	L-110-5.7	1" RIGID STEEL CONDUIT - SURFACE MOUNTED	100	LF		
44	L-115-5.1	NEW HANDHOLE, PREFABRICATED CONCRETE 2'X3'X3' WITH AIRCRAFT RATED LID, FURNISHED AND INSTALLED	10	EA		
45	L-115-5.2	NEW PULLBOX, SIZE 5, (12"X24") FURNISHED AND INSTALLED WITH GRAVEL SUMPS, GROUND RODS & BONDING TO STEEL LIDS	2	EA		
46	L-125-5.1	NEW L-858(L) SIZE 2, 3-MODULE, AIRFIELD GUIDANCE SIGN, ON NEW SIGN BASE	3	EA		
47	L-125-5.2	NEW ELEVATED L-861T(L) LED TAXIWAY EDGE LIGHT AND ISOLATION TRANSFORMER ON NEW L-867 BASE CAN	11	EA		
48	L-125-5.3	INSTALL SALVAGED TAXIWAY EDGE LIGHT ON EXISTING BASE CAN	1	EA		
49	L-125-5.4	INSTALL SALVAGED 3-MODULE AIRFIELD GUIDANCE SIGN ON NEW CONCRETE SIGN BASE	1	EA		
50	L-125-5.5	NEW ELEVATED L-861T(L) LED TAXIWAY EDGE LIGHT AND ISOLATION TRANSFORMER (SPARES)	1	EA		
51	NA	OWNER CONTROLLED FUNDS (INCLUDES REMOVAL AND REPLACEMENT OF UNSUITABLE MATERIAL)	1	EA	\$500,000.00	\$500,000.00

BASE BID TOTAL (ITEMS 1 - 51)

& ____/100 DOLLARS

WRITTEN WORDS

Prepared By:

Signature

Name

Position/Title

Firm Name

PHOENIX GOODYEAR AIRPORT
NEW APRON AND TAXIWAY CONNECTORS
BID PROPOSAL FORM

ALTERNATE NO. 1						
LINE NO.	ITEM NO.	DESCRIPTION	EST. QTY.	UNIT	UNIT PRICE	EXTENDED TOTAL
1	C-100	CONTRACTOR QUALITY CONTROL PLAN (CQCP)	1	LS		
2	C-102	TEMPORARY POLLUTION, EROSION, AND SILTATION CONTROL	1	LS		
3	C-105	MOBILIZATION	1	LS		
4	C-106	SAFETY, SECURITY AND MAINTENANCE OF TRAFFIC	1	LS		
5	P-152-4.1	EMBANKMENT	18,225	CY		
6	P-152-4.2	REMOVAL AND REPLACEMENT OF UNSUITABLE MATERIAL (ALLOWANCES)	1	FA		
ALTERNATE NO. 1 TOTAL (ITEMS 1-6)						
& ____/100 DOLLARS						
WRITTEN WORDS						

ALTERNATE NO. 2						
LINE NO.	ITEM NO.	DESCRIPTION	EST. QTY.	UNIT	UNIT PRICE	EXTENDED TOTAL
1	C-100	CONTRACTOR QUALITY CONTROL PLAN (CQCP)	1	LS		
2	C-102	TEMPORARY POLLUTION, EROSION, AND SILTATION CONTROL	1	LS		
3	C-105	MOBILIZATION	1	LS		
4	C-106	SAFETY, SECURITY AND MAINTENANCE OF TRAFFIC	1	LS		
5	P-101-5.1	COLD MILLING	670	SY		
6	P-152-4.1	EMBANKMENT	435	CY		
7	P-154-5.1	6" THICK SUBBASE COURSE	4690	SY		
8	P-209-5.1	12" CRUSHED AGGREGATE BASE COURSE	770	CY		
9	P-304-8.1	6" THICK CEMENT-TREATED BASE COURSE	4690	SY		
10	P-401-8.1	4" THICK BITUMINOUS SURFACE COURSE	535	TON		
11	P-501-8.1	17" PORTLAND CEMENT CONCRETE PAVEMENT	4690	SY		
12	P-602-5.1	BITUMINOUS PRIME COAT	5	TON		
13	P-620-5.1	TAXIWAY PAINTSTRIPING (YELLOW, REFLECTORIZED)	635	SF		
14	TSP-1	SOIL STERILANT	6990	SY		
15	TSP-3	ADJUST UTILITY BOX AND COVER TO GRADE	3	EA		
16	NA	OWNER CONTROLLED FUNDS (INCLUDES REMOVAL AND REPLACEMENT OF UNSUITABLE MATERIAL)	1	EA	\$150,000.00	\$150,000.00
ALTERNATE NO. 2 TOTAL (ITEMS 1-16)						
& ____/100 DOLLARS						
WRITTEN WORDS						

PHOENIX GOODYEAR AIRPORT
 NEW APRON AND TAXIWAY CONNECTORS
 BID PROPOSAL FORM

ALTERNATE NO. 3						
LINE NO.	ITEM NO.	DESCRIPTION	EST. QTY.	UNIT	UNIT PRICE	EXTENDED TOTAL
1	C-100	CONTRACTOR QUALITY CONTROL PLAN (CQCP)	1	LS		
2	C-102	TEMPORARY POLLUTION, EROSION, AND SILTATION CONTROL	1	LS		
3	C-105	MOBILIZATION	1	LS		
4	C-106	SAFETY, SECURITY AND MAINTENANCE OF TRAFFIC	1	LS		
5	P-101-5.1	COLD MILLING	830	SY		
6	P-152-4.1	EMBANKMENT	610	CY		
7	P-154-5.1	6" THICK SUBBASE COURSE	6800	SY		
8	P-209-5.1	12" CRUSHED AGGREGATE BASE COURSE	810	CY		
9	P-304-8.1	6" THICK CEMENT-TREATED BASE COURSE	6800	SY		
10	P-401-8.1	4" THICK BITUMINOUS SURFACE COURSE	565	TON		
11	P-501-8.1	17" PORTLAND CEMENT CONCRETE PAVEMENT	6800	SY		
12	P-602-5.1	BITUMINOUS PRIME COAT	5	TON		
13	P-620-5.1	TAXIWAY PAINTSTRIPING (YELLOW, REFLECTORIZED)	720	SF		
14	P-620-5.1	EXISTING PAVEMENT MARKING REMOVAL	300	SF		
15	TSP-1	SOIL STERILANT	9215	SY		
16	TSP-3	ADJUST UTILITY BOX AND COVER TO GRADE	2	EA		
17	NA	OWNER CONTROLLED FUNDS (INCLUDES REMOVAL AND REPLACEMENT OF UNSUITABLE MATERIAL)	1	EA	\$150,000.00	\$150,000.00
ALTERNATE NO. 3 TOTAL (ITEMS 1-17)						
					& ____/100 DOLLARS	
WRITTEN WORDS						

PHOENIX GOODYEAR AIRPORT
 NEW APRON AND TAXIWAY CONNECTORS
 BID PROPOSAL FORM

ALTERNATE NO. 4						
LINE NO.	ITEM NO.	DESCRIPTION	EST. QTY.	UNIT	UNIT PRICE	EXTENDED TOTAL
1	C-100	CONTRACTOR QUALITY CONTROL PLAN (CQCP)	1	LS		
2	C-102	TEMPORARY POLLUTION, EROSION, AND SILTATION CONTROL	1	LS		
3	C-105	MOBILIZATION	1	LS		
4	C-106	SAFETY, SECURITY AND MAINTENANCE OF TRAFFIC	1	LS		
5	P-101-5.1	COLD MILLING	435	SY		
6	P-152-4.1	EMBANKMENT	3330	CY		
7	P-154-5.1	6" THICK SUBBASE COURSE	3755	SY		
8	P-209-5.1	12" CRUSHED AGGREGATE BASE COURSE	2320	CY		
9	P-304-8.1	6" THICK CEMENT-TREATED BASE COURSE	3755	SY		
10	P-401-8.1	4" THICK BITUMINOUS SURFACE COURSE	1620	TON		
11	P-501-8.1	17" PORTLAND CEMENT CONCRETE PAVEMENT	3755	SY		
12	P-602-5.1	BITUMINOUS PRIME COAT	15	TON		
13	P-620-5.1	TAXIWAY PAINTSTRIPING (YELLOW, REFLECTORIZED)	1950	SF		
14	P-620-5.1	EXISTING PAVEMENT MARKING REMOVAL	590	SF		
15	D-751-5.1	AIRCRAFT RATED CATCH BASIN	1	EA		
16	TSP-1	SOIL STERILANT	10710	SY		
17	TSP-3	ADJUST UTILITY BOX AND COVER TO GRADE	8	EA		
18	NA	OWNER CONTROLLED FUNDS (INCLUDES REMOVAL AND REPLACEMENT OF UNSUITABLE MATERIAL)	1	EA	\$150,000.00	\$150,000.00
ALTERNATE NO. 4 TOTAL (ITEMS 1-18)						
					& _____/100 DOLLARS	
WRITTEN WORDS						